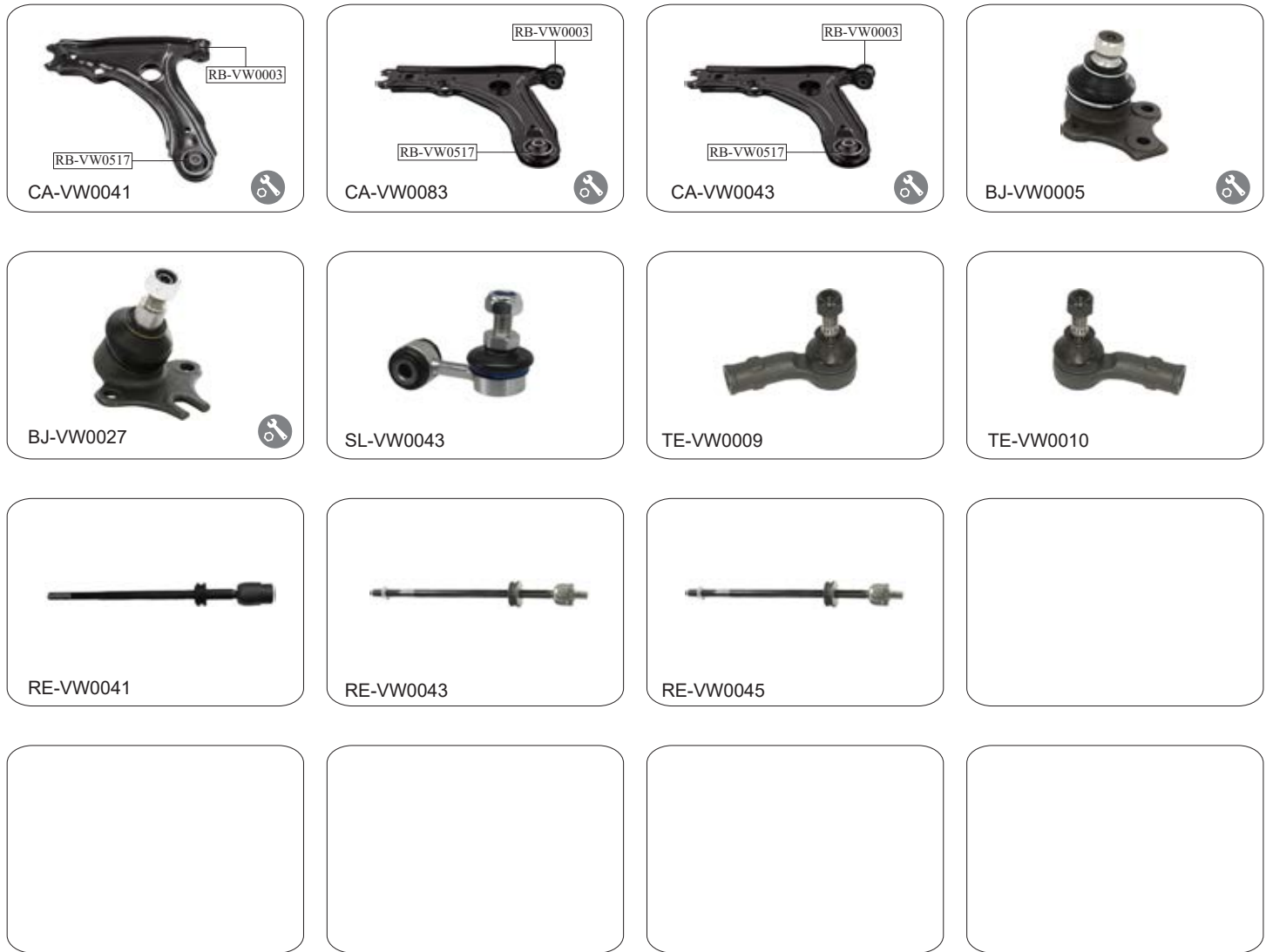

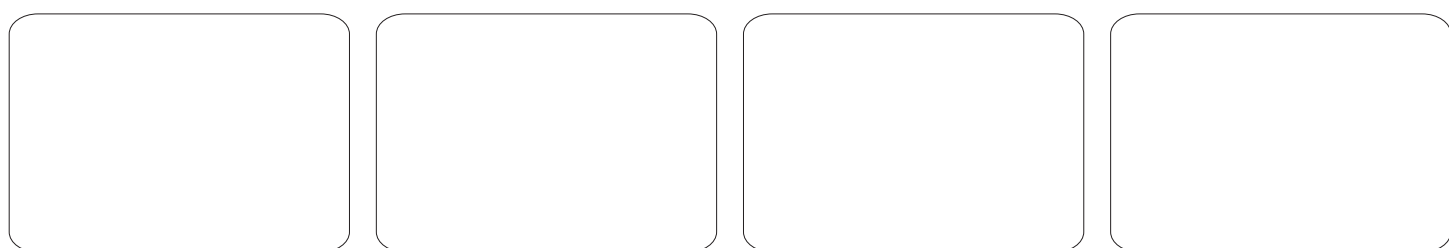
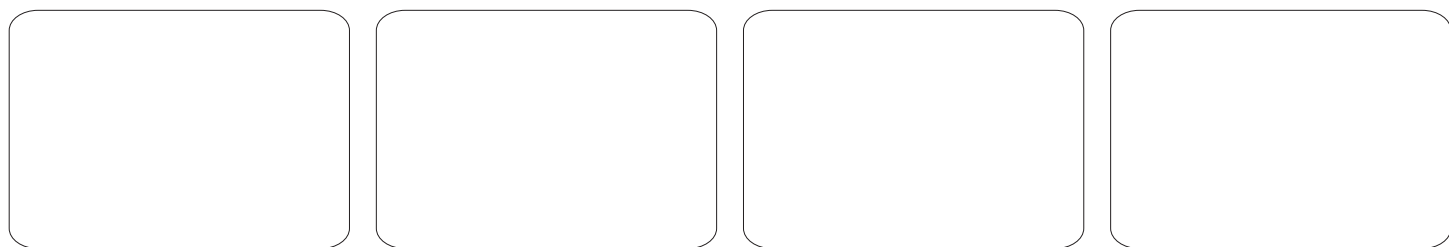
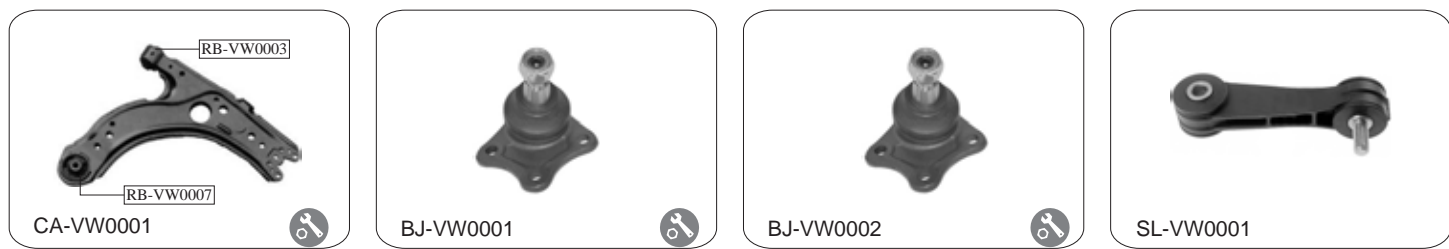


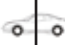


<h2>VOLKSWAGEN</h2>	<h2>GOLF III CADDY II</h2>	1991-1997 1995-2004
---------------------	--------------------------------	------------------------



OE NO.		↑	↓	L	R	Description
191 407 151B	•			•	•	CONTROL ARM
1H0 407 151	•			•	•	CONTROL ARM / except. GTI/GTI 16V/VR6
1H0 407 151A	•			•	•	CONTROL ARM / for. GTI/GTI 16V/VR6
357 407 365A	•			•	•	BALL JOINT
1H0 407 365	•			•	•	BALL JOINT / for. GTI/GTI 16V/VR6
1H0 411 315	•			•	•	STABILIZER LINK / for. GTI/GTI 16V/VR6
191 419 811	•			•		TIE ROD END / M14x1.5 RHT
191 419 812	•				•	TIE ROD END / M14x1.5 RHT
1H0 419 821	•			•	•	RACK END / M14x1.5 RHT / MANUAL STEERING
1H0 422 821A	•			•	•	RACK END / M14x1.5 RHT / POWER STEERING TRW
1H0 422 821B	•			•	•	RACK END / M14x1.5 RHT / POWER STEERING ZF

<h1 style="margin:0;">VOLKSWAGEN</h1>	<h2 style="margin:0;">GOLF IV NEW BEETLE BORA</h2>	1998-2002 1998-2010 1998-2004
---------------------------------------	--	-------------------------------------

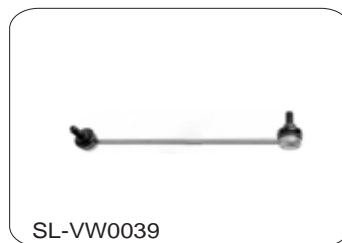
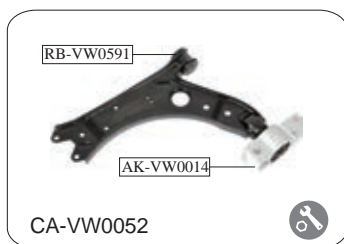


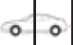
OE NO.				L	R	Description
1J0 407 151A	•			•	•	CONTROL ARM / METAL
1J0 407 151A	•			•	•	CONTROL ARM / METAL
1J0 407 365A	•			•	•	BALL JOINT
1J0 407 366A	•			•	•	BALL JOINT
1J0 411 315C	•			•	•	STABILIZER LINK / PLASTIC
1J0 411 315G	•			•	•	STABILIZER LINK / STEEL.
1J0 422 811B	•			•		TIE ROD END
1J0 422 812B	•				•	TIE ROD END

VOLKSWAGEN

GOLF V GOLF VARIANT CADDY III / TOURAN I

2003>
2004>
2004>

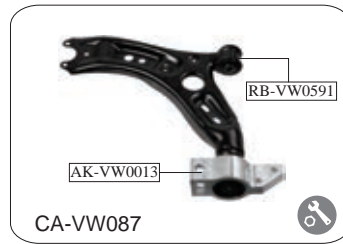
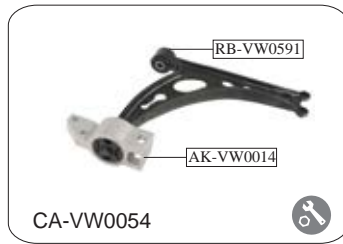


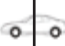


OE NO.		↑	↓	L	R	Description
1K0 407 151P	•			•	•	CONTROL ARM / GASOLINE ENGINE
1K0 407 152P	•			•	•	CONTROL ARM / GASOLINE ENGINE
1K0 407 151R	•			•	•	CONTROL ARM / CASTING / DIESEL ENGINE
1K0 407 152R	•			•	•	CONTROL ARM / CASTING / DIESEL ENGINE
1K0 407 365C	•			•	•	BALL JOINT
1K0 407 366C	•			•	•	BALL JOINT
1K0 199 231G	•			•		ARM SUPPORT
1K0 199 232G	•				•	ARM SUPPORT
1K0 505 323H		•		•	•	CONTROL ARM
1K0 501 529F		•		•		CONTROL ARM
1K0 501 530C		•			•	CONTROL ARM
1K0 411 315B	•			•	•	STABILIZER LINK
1K0 423 811A	•			•		TIE ROD END
1K0 423 812A	•				•	TIE ROD END
1K0 423 810A	•			•	•	RACK END

VOLKSWAGEN

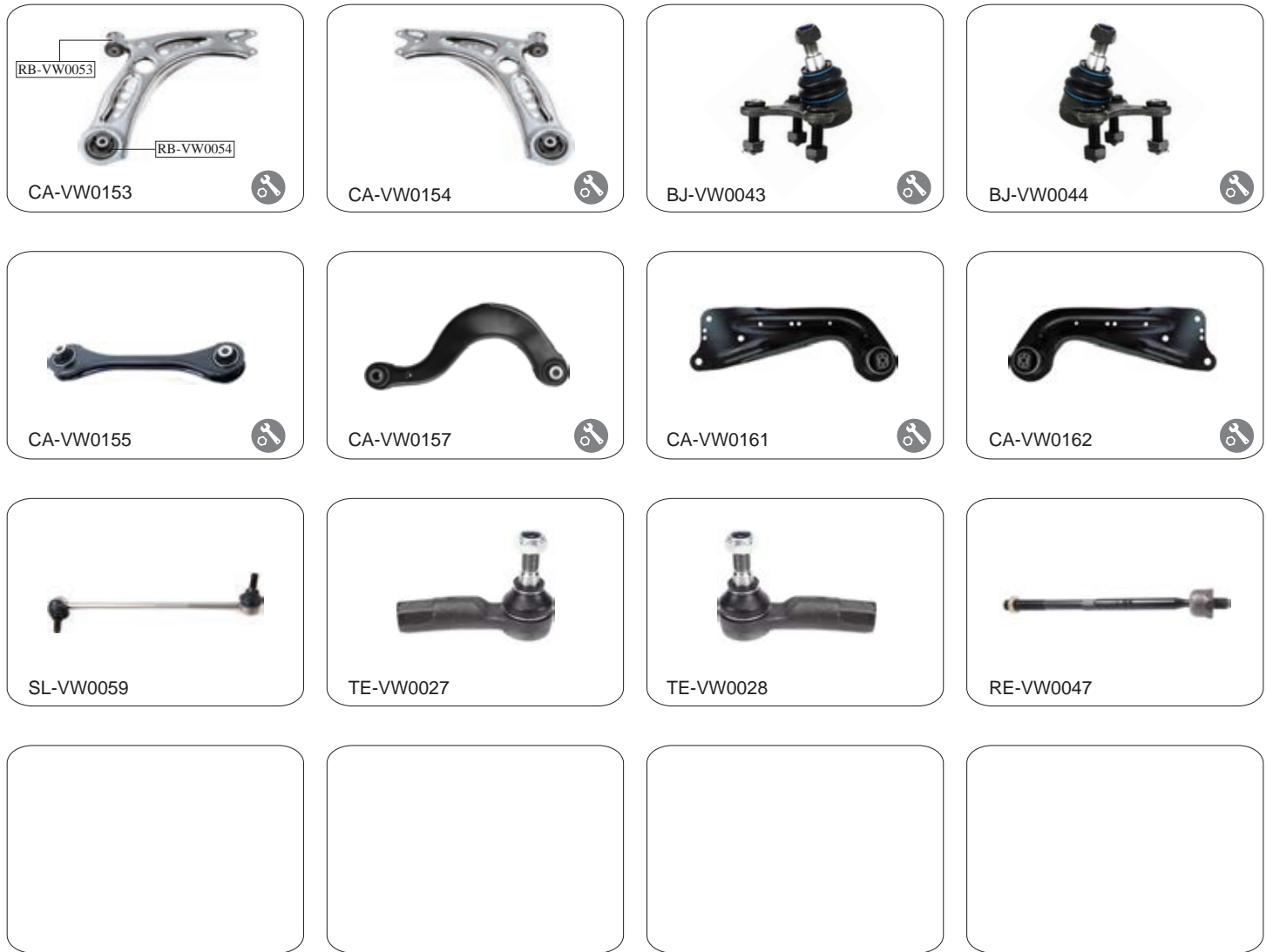
GOLF VI GOLF VI VARIANT

2008-2012
2009>



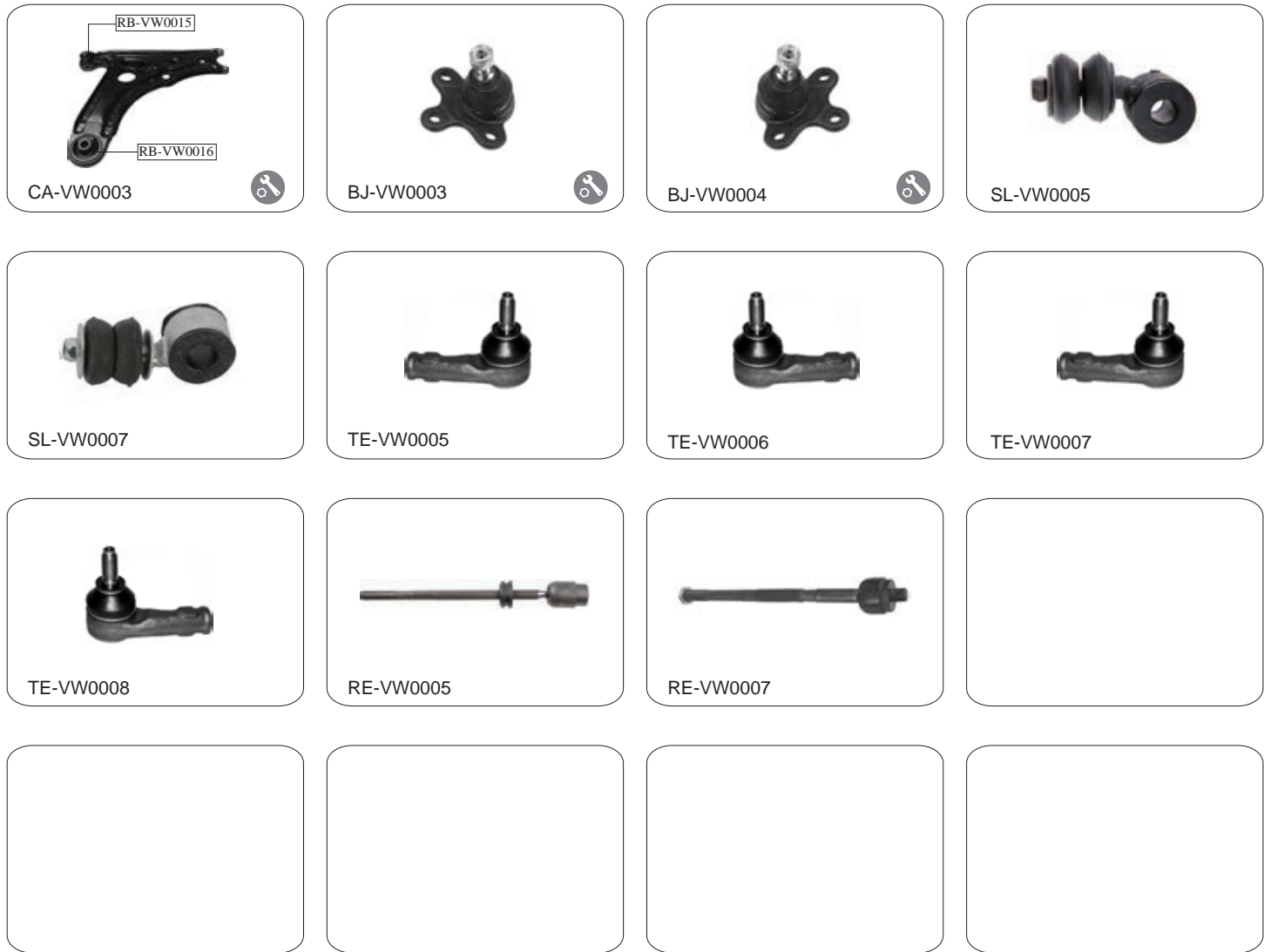
OE NO.				L	R	Description
1K0 407 151M	•			•	•	CONTROL ARM / CASTING / DIESEL ENGINE
1K0 407 152M	•			•	•	CONTROL ARM / CASTING / DIESEL ENGINE
1K0 407 151BC	•			•	•	CONTROL ARM /GASOLINE ENGIN
1K0 407 152BC	•			•	•	CONTROL ARM /GASOLINE ENGIN
1K0 407 365C	•			•	•	BALL JOINT
1K0 407 366C	•			•	•	BALL JOINT
1K0 199 231G	•			•	•	ARM SUPPORT
1K0 199 232G	•			•	•	ARM SUPPORT
1K0 505 323H		•		•	•	CONTROL ARM
1K0 501 529F		•		•		CONTROL ARM
1K0 501 530C		•			•	CONTROL ARM
1K0 411 315B		•		•	•	STABILIZER LINK
1K0 423 811A	•			•		TIE ROD END
1K0 423 812A	•				•	TIE ROD END
1K0 423 810A	•			•	•	RACK END

VOLKSWAGEN **Golf VII** 2014-



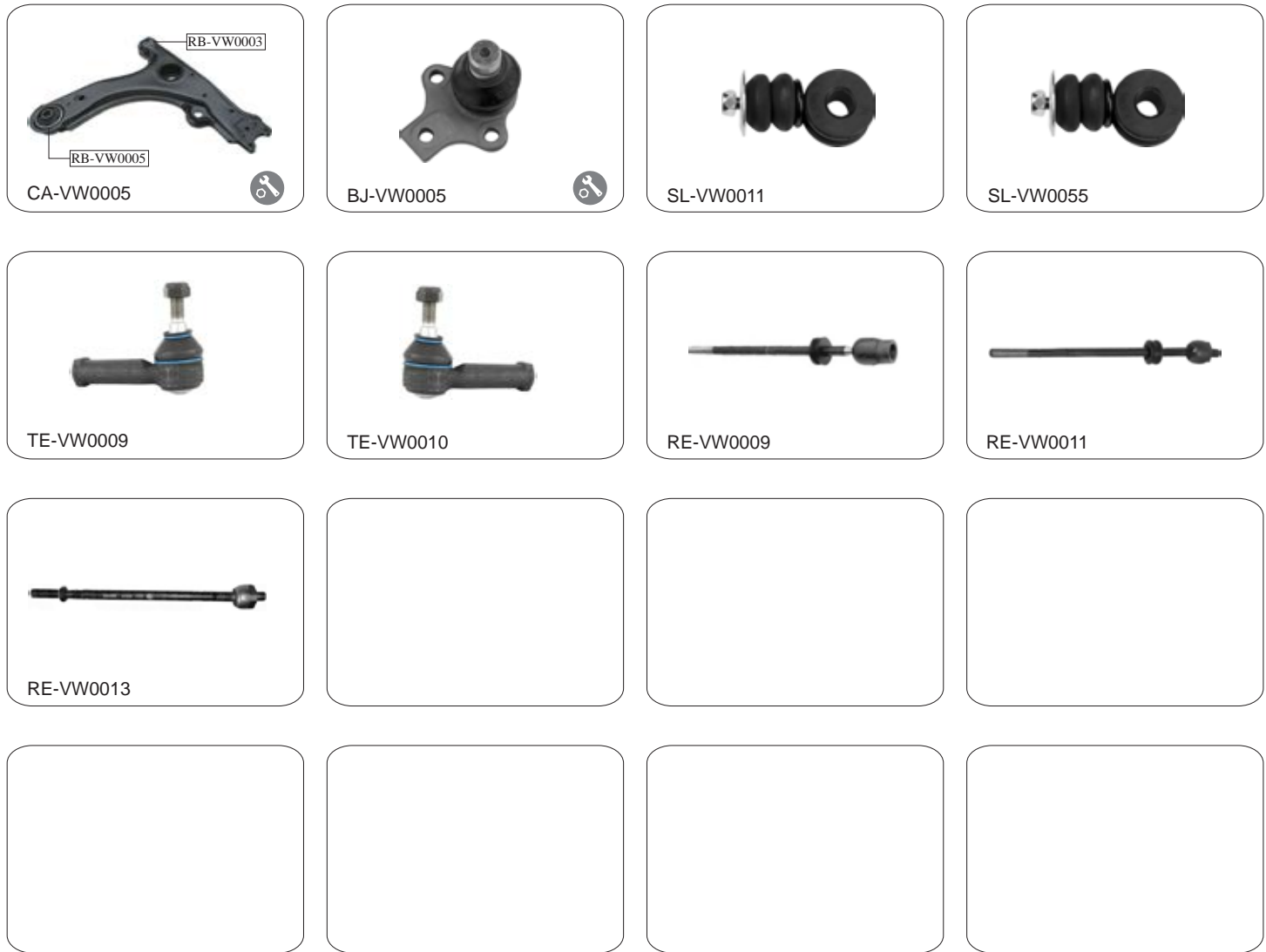
OE NO.		↑	↓	L	R	Description
5Q0 407 151J	•		•	•		CONTROL ARM
5Q0 407 152J	•		•		•	CONTROL ARM
5Q0 501 529C		•		•	•	CONTROL ARM
5Q0 505 323D		•		•	•	CONTROL ARM
5Q0 505 223D		•		•		CONTROL ARM
5Q0 505 224D		•			•	CONTROL ARM
5Q0 407 365A	•			•		BALL JOINT
5Q0 407 366A	•				•	BALL JOINT
5Q0 411 315A				•	•	STABILIZER LINK
1K0 423 811J	•			•		TIE ROD END / M16x1.5 RHT
1K0 423 812J	•				•	TIE ROD END / M16x1.5 RHT
1K0 423 810A	•			•	•	RACK END

VOLKSWAGEN	LUPO	09/1998-
-------------------	-------------	----------



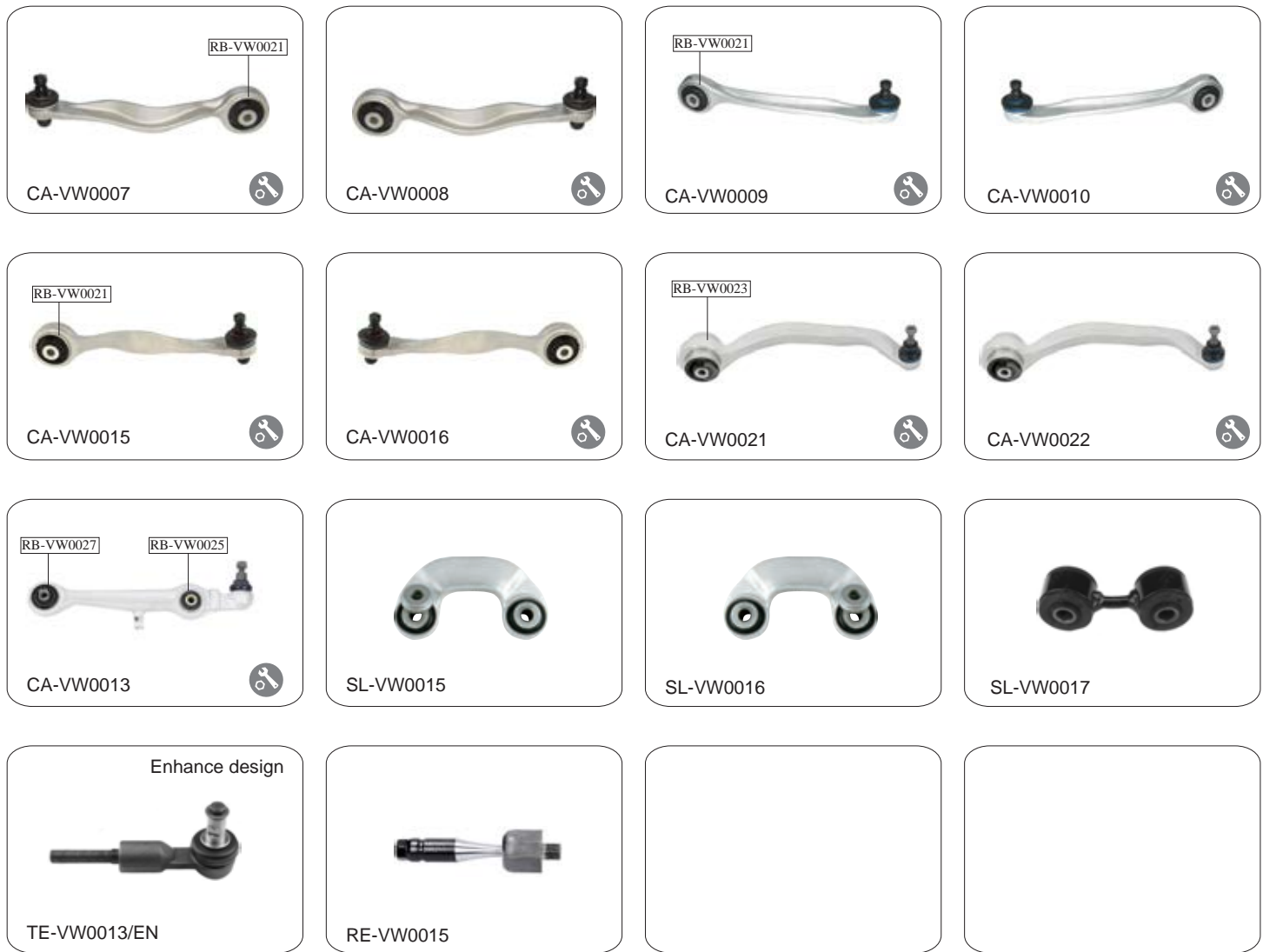
OE NO.					L	R	Description
6X0 407 151A	•			•	•	•	CONTROL ARM
6N0 407 365	•			•	•		BALL JOINT
6N0 407 366	•			•		•	BALL JOINT
6N0 411 315	•				•	•	STABILIZER LINK / DIA 18mm
6N0 411 315A	•				•	•	STABILIZER LINK / DIA 20mm
6X0 419 811	•					•	TIE ROD END / M14x.1.5 RHT / MANUAL STEERINGT
6X0 419 812	•					•	TIE ROD END / M14x.1.5 RHT / MANUAL STEERINGT
6N0 419 811	•					•	TIE ROD END / M14x.1.5 RHT / POWER STEERING
6N0 419 812	•					•	TIE ROD END / M14x.1.5 RHT / POWER STEERING
6N0 419 821	•				•	•	RACK END / M14x.1.5 RHT / MANUAL STEERING
6X0 422 821	•				•	•	RACK END / M14x.1.5 RHT / POWER STEERING

<h1>VOLKSWAGEN</h1>	<h1>PASSAT (B3 / B4)</h1>	1994-1996
---------------------	---------------------------	-----------



OE NO.	🚗	↑	↓	L	R	Description
357 407 151	•		•	•	•	CONTROL ARM / METAL
357 407 365	•		•	•	•	BALL JOINT
357 411 315C	•			•	•	STABILIZER LINK
357 411 315D	•			•	•	STABILIZER LINK
3A0 422 811	•			•		TIE ROD END / M14x1.5 RHT
3A0 422 812	•				•	TIE ROD END / M14x1.5 RHT
357 419 821	•			•	•	RACK END / M14x1.5 RHT L:369mm
3A0 422 821E	•			•	•	RACK END / M14x1.5 RHT L:373mm
3A0 422 821C	•			•	•	RACK END / M14x1.5 RHT L:356mm

<h1>VOLKSWAGEN</h1>	<h1>PASSAT (B5)</h1>	1997-2000
---------------------	----------------------	-----------



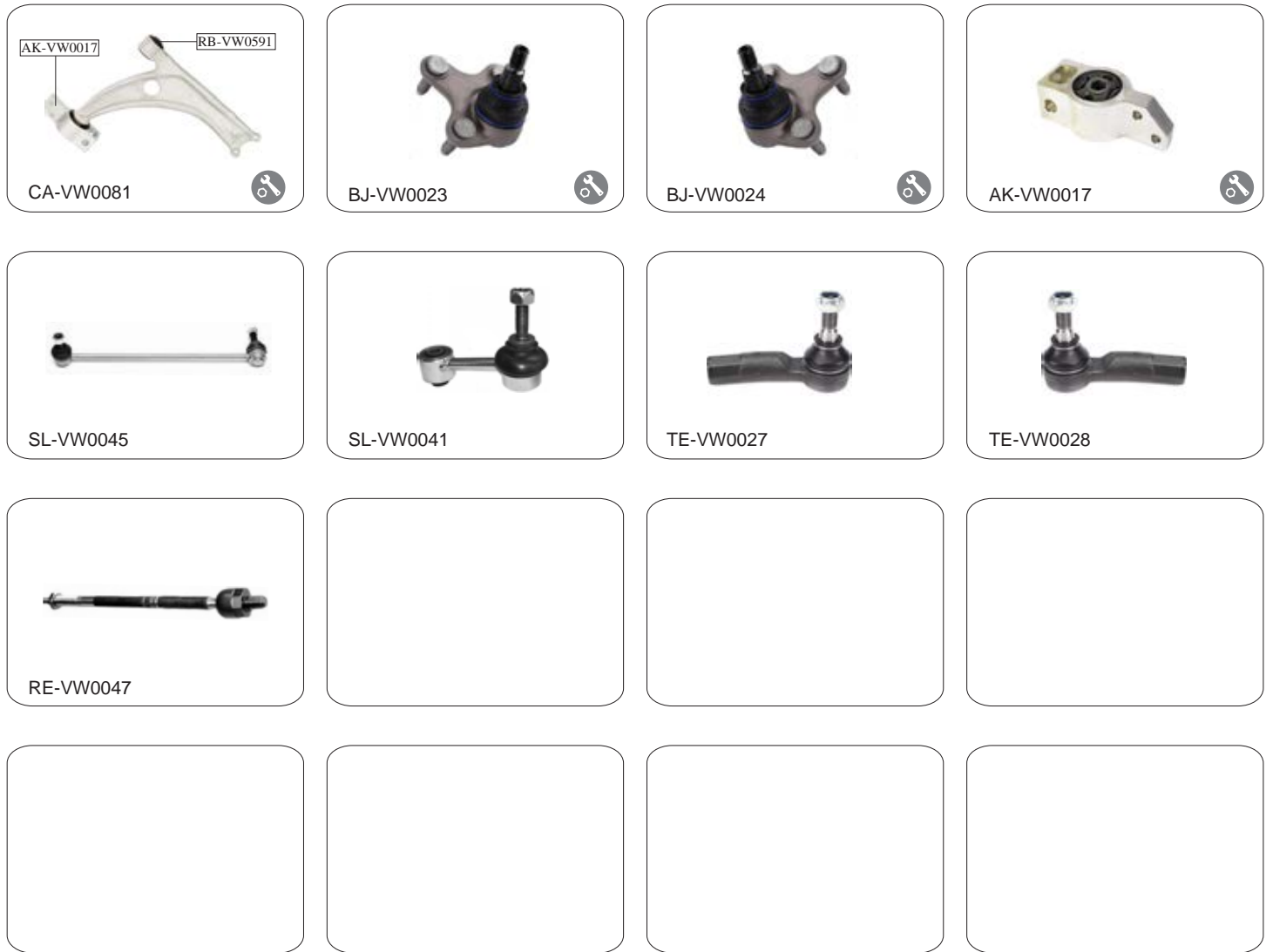
OE NO.						Description
4D0 407 509D	•	•		•		CONTROL ARM / ALUMINUM
4D0 407 510D	•	•			•	CONTROL ARM / ALUMINUM
8D0 407 505K	•	•		•		CONTROL ARM / ALUMINUM
8D0 407 506K	•	•			•	CONTROL ARM / ALUMINUM
8D0 407 509C	•	•		•		CONTROL ARM / ALUMINUM
8D0 407 510C	•	•			•	CONTROL ARM / ALUMINUM
8E0 407 693P	•	•		•		CONTROL ARM / ALUMINUM
8E0 407 694P	•	•			•	CONTROL ARM / ALUMINUM
4D0 407 151P	•			•	•	CONTROL ARM / ALUMINUM
8D0 411 317D	•			•		STABILIZER LINK
8D0 411 318D	•				•	STABILIZER LINK
8E0 505 465C		•		•	•	STABILIZER LINK
4B0 419 811E	•			•	•	TIE ROD END / M 14x1.5 RHT
4D0 422 821	•			•	•	RACK END / M 14x1.5 RHT

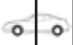


<h1>VOLKSWAGEN</h1>	<h1>PASSAT (B5.5)</h1>	2001-2005
---------------------	------------------------	-----------



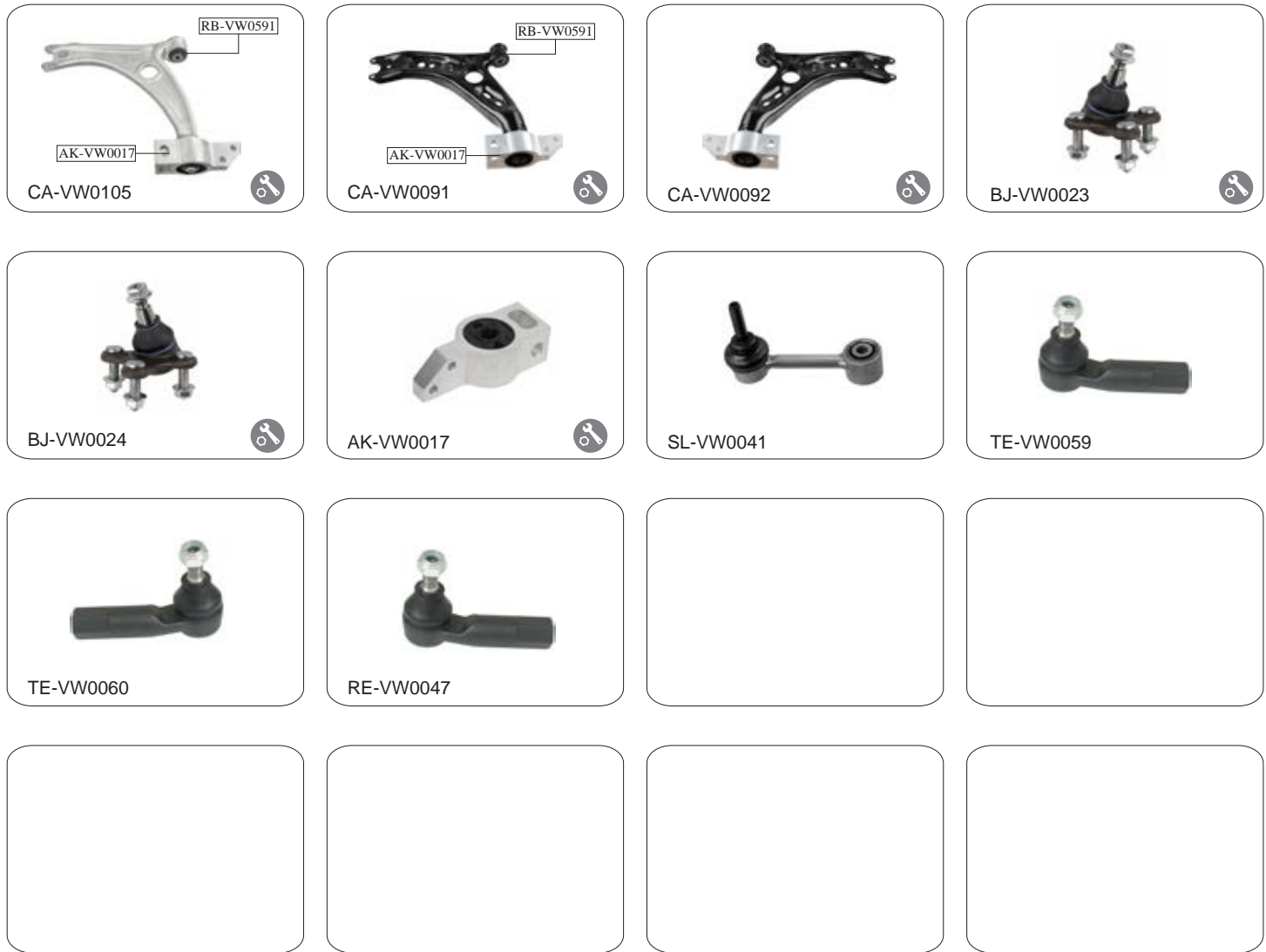
OE NO.								Description
8E0 407 509A	•					•		CONTROL ARM / ALUMINUM
8E0 407 510A	•						•	CONTROL ARM / ALUMINUM
8E0 407 505A	•					•		CONTROL ARM / ALUMINUM
8E0 407 506A	•						•	CONTROL ARM / ALUMINUM
8E0 407 693P	•					•		CONTROL ARM / ALUMINUM
8E0 407 694P	•						•	CONTROL ARM / ALUMINUM
4B3 407 151C	•					•	•	CONTROL ARM / ALUMINUM
8E0 411 317	•					•		STABILIZER LINK
8E0 411 318	•						•	STABILIZER LINK
8E0 505 465K	•					•	•	STABILIZER LINK
8E0 419 811E	•					•	•	TIE ROD END / M 14x1.5 RHT
8E0 422 821	•					•	•	RACK END / M 14x1.5 RHT

<h2>VOLKSWAGEN</h2>	PASSAT (B6) PASSAT Variant PASSAT CC	2005-2010 2005-2010 2008-2012
---------------------	---	-------------------------------------



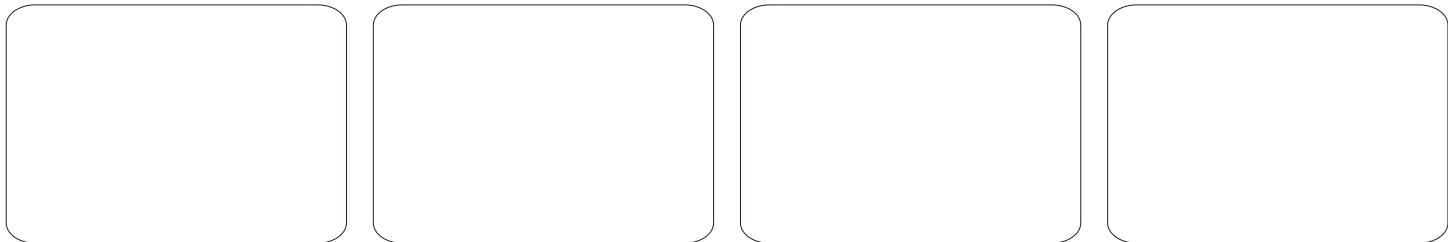
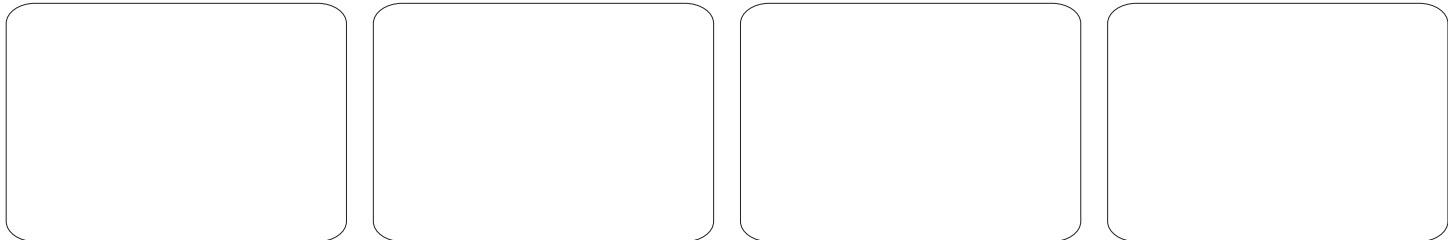
OE NO.				L	R	Description
3C0 407 151A	•		•	•		CONTROL ARM / ALUMINUM
3C0 407 151A	•		•		•	CONTROL ARM / ALUMINUM
1J0 407 365A	•		•	•		BALL JOINT
1J0 407 366A	•		•		•	BALL JOINT
3C0 199 231A/B	•		•	•	•	ARM SUPPORT
1K0 411 315B/D	•			•	•	STABILIZER LINK
1K0 505 465J	•	•		•	•	STABILIZER LINK
1K0 423 811A	•			•		TIE ROD END / M16x1.5 RHT
1K0 423 812A	•				•	TIE ROD END / M16x1.5 RHT
1K0 423 810A	•			•	•	RACK END






VOLKSWAGEN	PASSAT (B7)	2010-2014
-------------------	--------------------	-----------



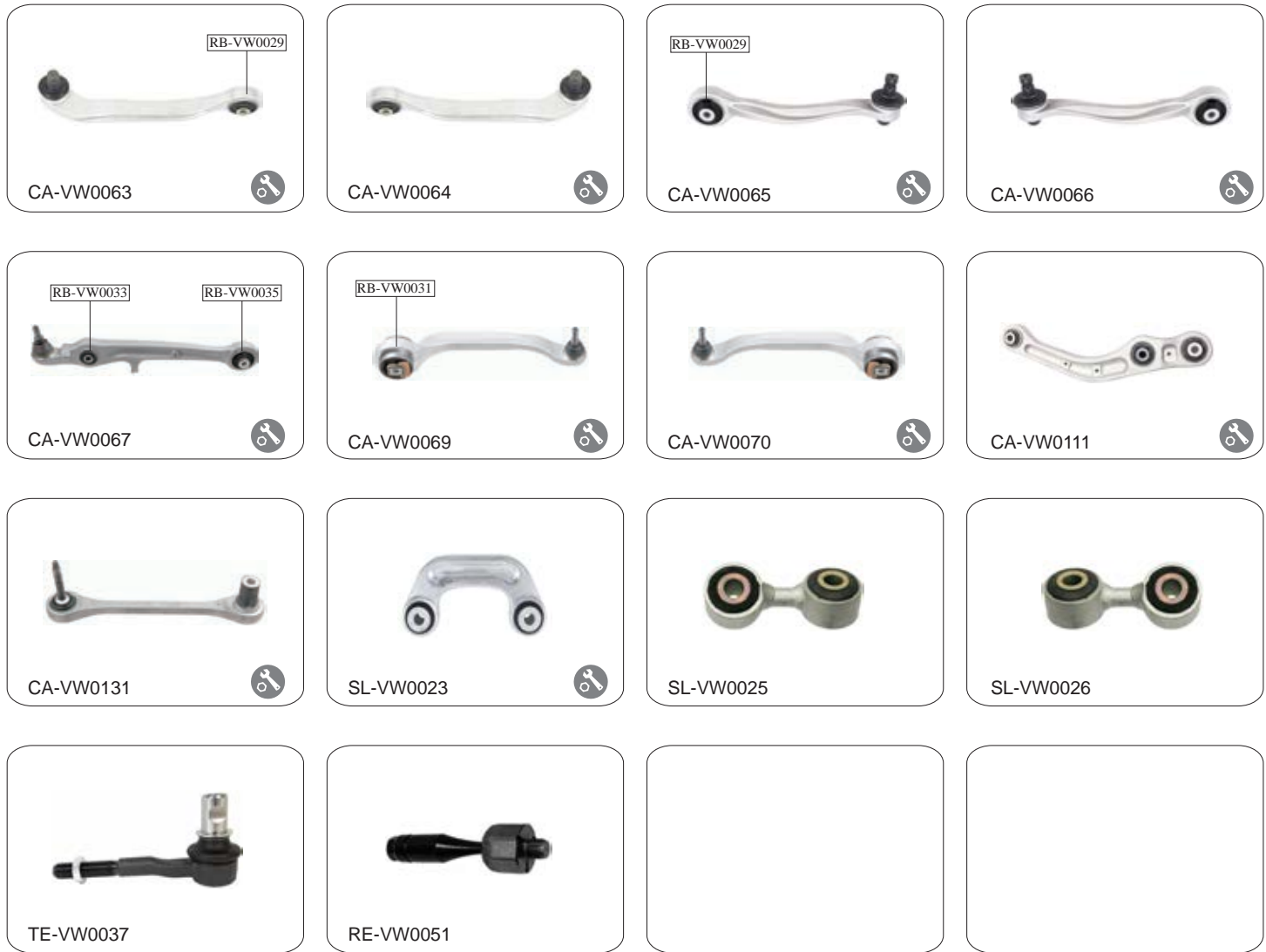
OE NO.	🚗	↑	↓	L	R	Description
3C0 407 151H	•		•	•	•	CONTROL ARM / ALUMINUM
5N0 407 151	•		•	•		CONTROL ARM / SHEET METAL
5N0 407 152	•		•		•	CONTROL ARM / SHEET METAL
3C0 407 365A	•		•	•		BALL JOINT
3C0 407 366A	•		•		•	BALL JOINT
3C0 199 231F	•		•	•	•	ARM SUPPORT
1K0 5054 65AA	•			•	•	STABILIZER LINK
1K0 423 811K	•			•		TIE ROD END
1K0 423 812K	•				•	TIE ROD END
1K0 423 810A	•			•	•	RACK END

VOLKSWAGEN	PASSAT (B8)	2014-
-------------------	--------------------	-------



OE NO.						Description
3Q0 407 151E	•			•	•	CONTROL ARM
3Q0 407 152E	•			•	•	CONTROL ARM
3C0 407 365B	•			•	•	BALL JOINT
3C0 407 366B	•			•	•	BALL JOINT
5Q0 411 315A	•			•	•	STABILIZER LINK
1K0 423 811K	•			•		TIE ROD END
1K0 423 812K	•				•	TIE ROD END
561 423 810	•			•	•	RACK END

<h1>VOLKSWAGEN</h1>	<h1>PHAETON</h1>	2002-2016
---------------------	------------------	-----------

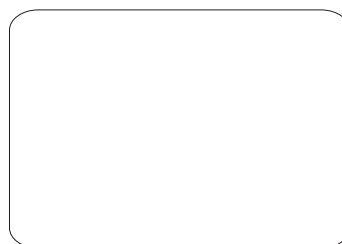



OE NO.						Description
4E0 407 505B	•			•	•	CONTROL ARM / ALUMINUM
4E0 407 506B	•			•	•	CONTROL ARM / ALUMINUM
4E0 407 509B	•			•	•	CONTROL ARM / ALUMINUM
4E0 407 510B	•			•	•	CONTROL ARM / ALUMINUM
4E0 407 151K	•			•	•	CONTROL ARM / STEEL
4E0 407 693F	•			•	•	CONTROL ARM / ALUMINUM
4E0 407 694F	•			•	•	CONTROL ARM / ALUMINUM
4E0 505 323Q	•			•	•	CONTROL ARM / ALUMINUM
4E0 501 529D	•			•	•	CONTROL ARM / ALUMINUM
4E0 411 317E	•			•	•	STABILIZER LINK
4E0 505 547A	•			•		STABILIZER LINK
4E0 505 548A	•				•	STABILIZER LINK
4E0 419 811D	•			•	•	TIE ROD END
4E0 419 821	•			•	•	RACK END

VOLKSWAGEN

POLO III

1994-2003



OE NO.		↑	↓	L	R	Description
6N0 407 151	•			•	•	CONTROL ARM / METAL
191 107 153	•			•	•	CONTROL ARM / METAL / only for 6V2, 6V5
6N0 407 365	•			•	•	BALL JOINT
6N0 407 365A	•			•	•	BALL JOINT
357 407 365	•			•	•	BALL JOINT / only for 6V2, 6V5
6N0 411 315	•			•	•	STABILIZER LINK / DIA 18mm
6N0 411 315A	•			•	•	STABILIZER LINK / DIA 20mm
6N0 419 811	•			•		TIE ROD END
6N0 419 812	•				•	TIE ROD END
6K0 422 811	•			•		TIE ROD END / only for 6V2, 6V5
6K0 422 812	•				•	TIE ROD END / only for 6V2, 6V5
6N0 419 821	•			•	•	RACK END / L:320mm
6N0 422 821A	•			•	•	RACK END / L:324mm

<h1>VOLKSWAGEN</h1>	<h2>POLO CLASSIC 6KV2</h2> <h2>POLO VARIANT 6KV5</h2>	<p>11/1995>09/2001 04/1997>09/2001</p>
---------------------	---	--

 CA-VW0041	 BJ-VW005	 SL-VW0035	 SL-VW0037
---------------	--------------	---------------	---------------

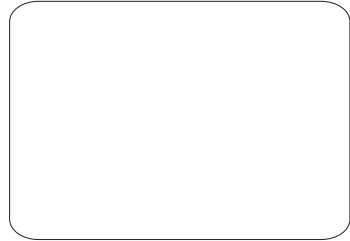
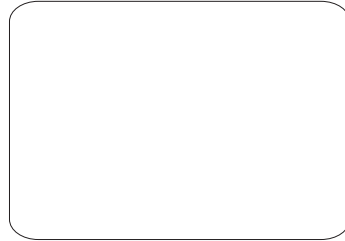
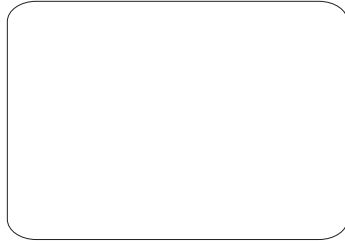
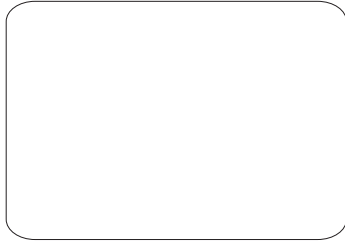
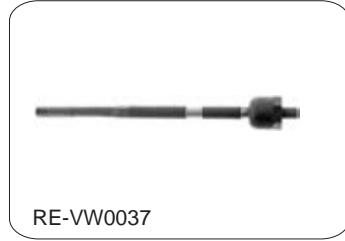
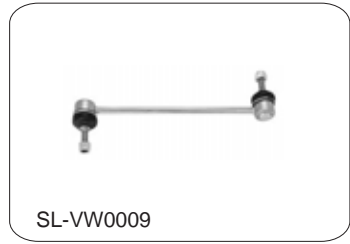
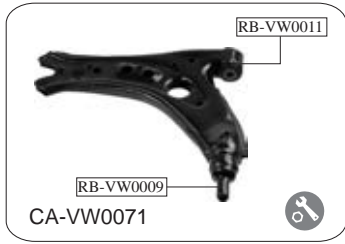
 TE-VW0045	 TE-VW0046		
---------------	---------------	--	--

--	--	--	--

--	--	--	--

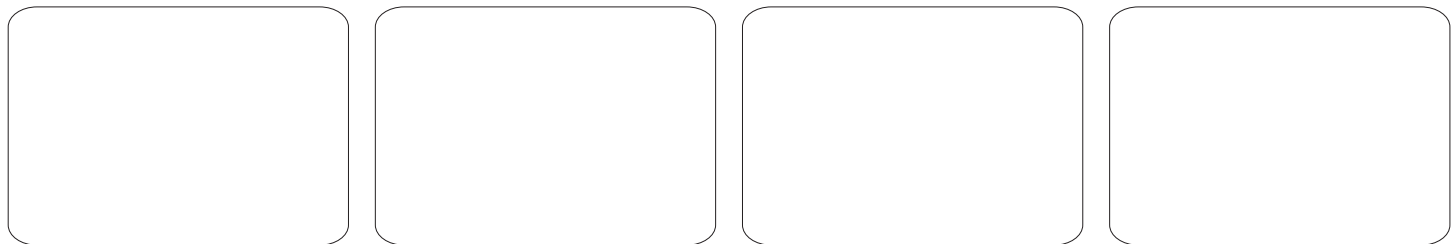
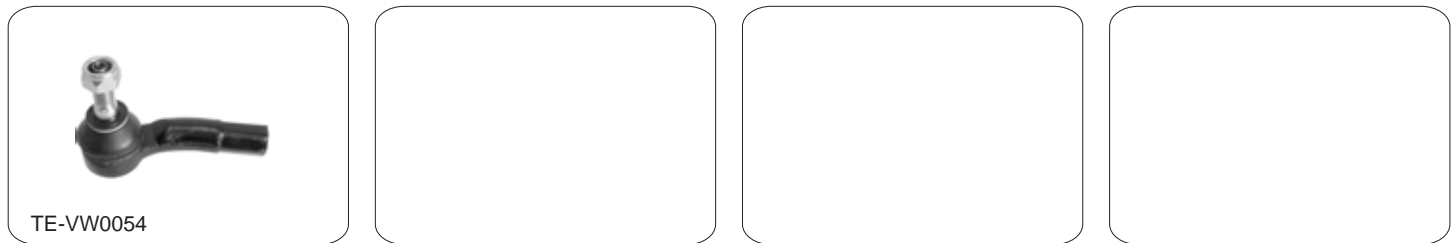
OE NO.		↑	↓	L	R	Description
191 107 151B	•		•	•	•	CONTROL ARM / METAL
357 407 365	•		•	•	•	BALL JOINT
191 411 315A	•			•	•	STABILIZER LINK
6K0 411 315	•			•	•	STABILIZER LINK
6K0 422 811	•			•		TIE ROD END
6K0 422 812	•				•	TIE ROD END

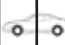


VOLKSWAGEN	POLO IV	2002-2009
-------------------	----------------	-----------



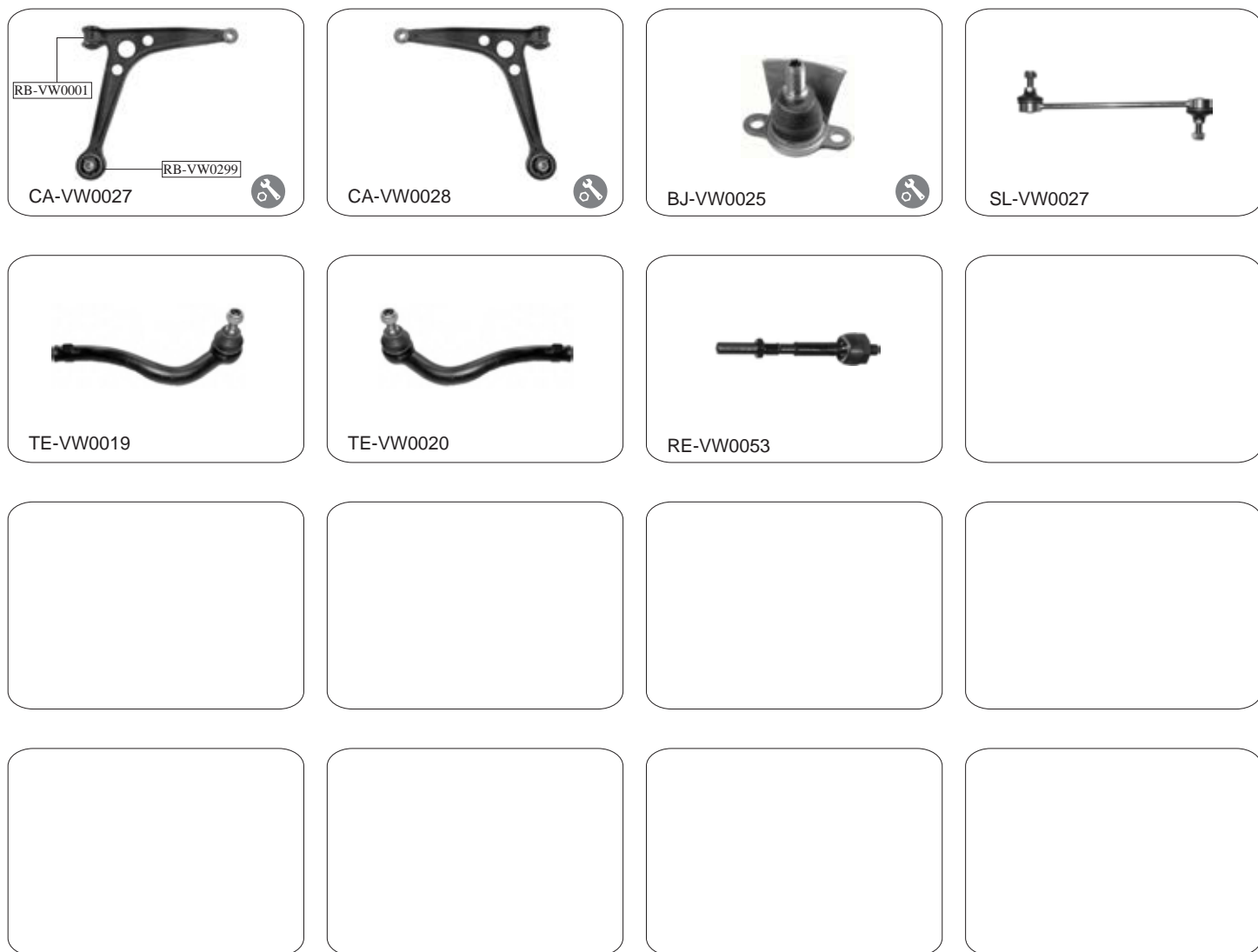
OE NO.				L	R	Description
6Q0 407 151D	•			•	•	CONTROL ARM / METAL
6Q0 407 365A	•			•	•	BALL JOINT
6Q0 407 366A	•			•	•	BALL JOINT
6Q0 411 315A/B	•			•	•	STABILIZER LINK
6Q0 423 811	•			•	•	TIE ROD END
6Q0 423 812	•			•	•	TIE ROD END
6Q0 423 821B	•			•	•	RACK END / TRW
6Q0 423 821C	•			•	•	RACK END / SMI

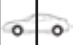


VOLKSWAGEN	POLO V	2009-
------------	--------	-------



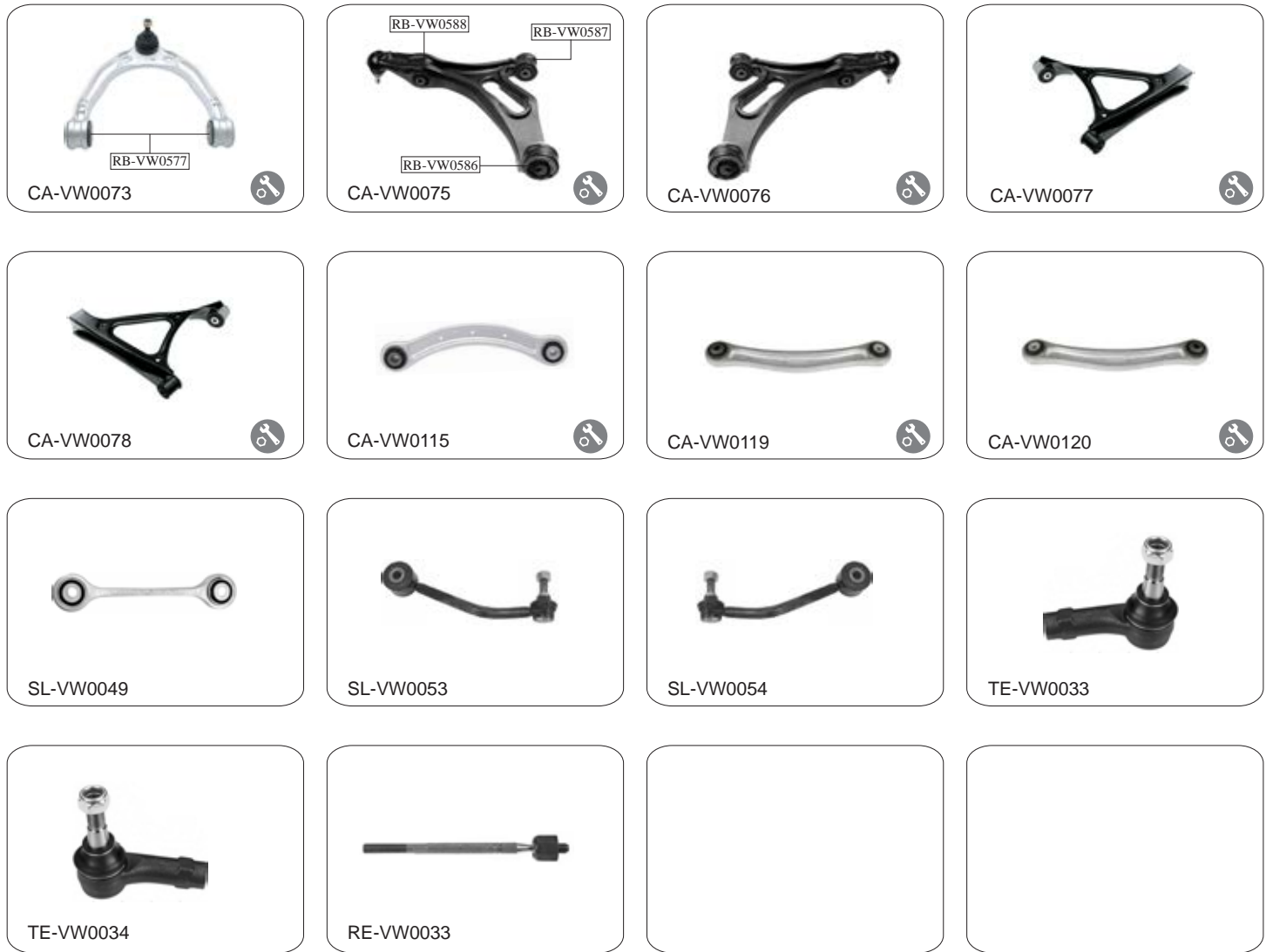
OE NO.				L	R	Description
6R0 407 151A	•		•	•		CONTROL ARM / METAL / (6R1, 6C1)
6R0 407 152A	•		•		•	CONTROL ARM / METAL / (6R1, 6C1)
6R0 407 151	•		•	•	•	CONTROL ARM / METAL / (9N)
6R0 407 152	•		•	•		CONTROL ARM / METAL / (9N)
6R0 407 365	•		•	•		BALL JOINT
6R0 407 366	•		•		•	BALL JOINT
6Q0 411 315A	•			•	•	STABILIZER LINK
6R0 422 811	•			•		TIE ROD END
6R0 422 812	•				•	TIE ROD END

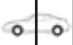
<h2>VOLKSWAGEN</h2>	<h2>SHARAN I / II</h2>	1996-
---------------------	------------------------	-------



OE NO.				L	R	Description
7M0 407 151B	●		●	●		CONTROL ARM / FORGEL
7M0 407 152B	●		●		●	CONTROL ARM / FORGEL
7M0 407 365A	●		●	●	●	BALL JOINT
7M0 411 317D	●			●	●	STABILIZER LINK
7M0 422 817	●			●		TIE ROD END
7M0 422 818	●				●	TIE ROD END
7M3 422 821	●			●	●	RACK END

<h2>VOLKSWAGEN</h2>	<h2>TOUAREG</h2>	10/2002-
---------------------	------------------	----------

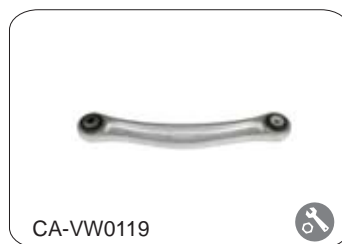
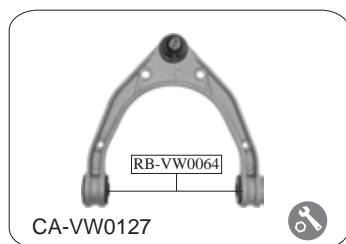





OE NO.		↑	↓	L	R	Description
7P0 407 021A	•		•	•	•	CONTROL ARM / ALUMINUM
7L0 407 151C	•		•	•		CONTROL ARM / CASTING
7L0 407 152C	•		•		•	CONTROL ARM / CASTING
7L0 505 311B		•		•		CONTROL ARM / METAL
7L0 505 312B		•			•	CONTROL ARM / METAL
7L0 505 323A		•		•	•	CONTROL ARM / ALUMINUM
7L0 505 397		•		•		CONTROL ARM / ALUMINUM
7L0 505 398		•			•	CONTROL ARM / ALUMINUM
7L0 411 317	•			•	•	STABILIZER LINK / ALUMINUM
7L0 505 465C		•		•		STABILIZER LINK
7L0 505 466C		•			•	STABILIZER LINK
7L0 422 817B	•			•		TIE ROD END
7L0 422 818B	•				•	TIE ROD END
7L0 422 821D	•			•	•	RACK END

VOLKSWAGEN

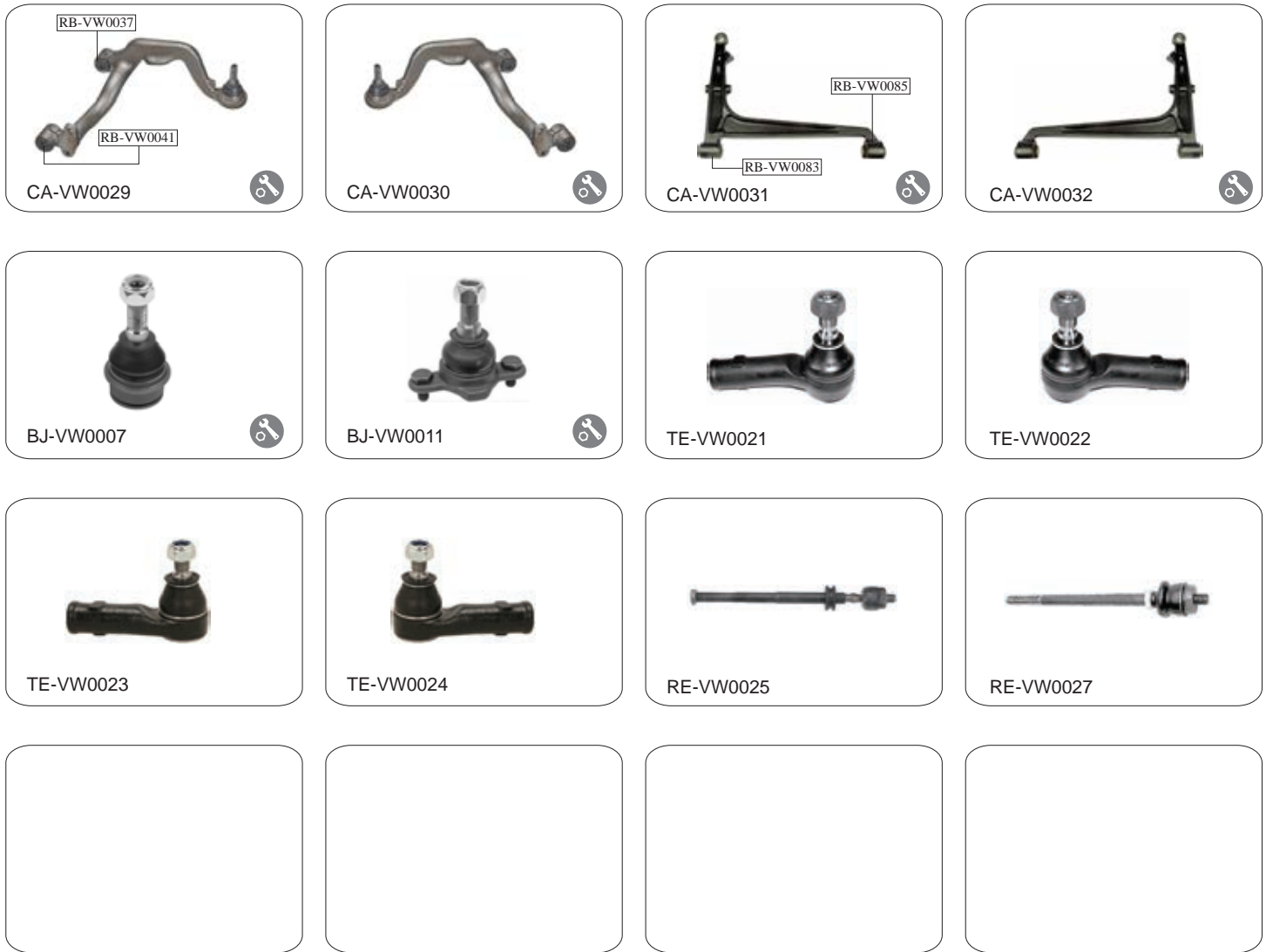
TOUAREG

2011-



OE NO.				L	R	Description
7P0 407 021	•			•	•	CONTROL ARM / ALUMINUM
7P0 407 151C	•			•	•	CONTROL ARM / ALUMINUM
7P0 407 152C	•			•	•	CONTROL ARM / ALUMINUM
7P0 505 311E		•		•		CONTROL ARM / METAL
7P0 505 312E		•			•	CONTROL ARM / METAL
7L0 505 323A		•		•	•	CONTROL ARM / ALUMINUM
7L0 505 397		•		•		CONTROL ARM / ALUMINUM
7L0 505 398		•			•	CONTROL ARM / ALUMINUM
7L0 501 529D		•		•	•	CONTROL ARM / ALUMINUM
7L0 411 317	•			•	•	STABILIZER LINK / ALUMINUM
7L0 505 465C		•		•		STABILIZER LINK
7L0 505 466C		•			•	STABILIZER LINK
7L0 422 817B	•			•		TIE ROD END
7L0 422 818B	•				•	TIE ROD END
7L0 422 821D	•			•	•	RACK END

VOLKSWAGEN	TRANSPORTER IV (T4)	10/1990-1995
------------	---------------------	--------------




OE NO.	🚗	↑	↓	L	R	Description
701 407 021B	•	•		•		CONTROL ARM / CASTING
701 407 022B	•	•			•	CONTROL ARM / CASTING
701 407 151A	•			•	•	CONTROL ARM / CASTING
701 407 152A	•			•	•	CONTROL ARM / CASTING
701 407 187B	•	•		•	•	BALL JOINT
701 407 361B	•			•	•	BALL JOINT
701 419 811A	•			•		TIE ROD END / M16x1.5 RHT / DIA 14mm
701 419 812A	•				•	TIE ROD END / M16x1.5 RHT / DIA 14mm
701 419 811B	•			•		TIE ROD END / M16x1.5 RHT / DIA 16mm
701 419 812B	•				•	TIE ROD END / M16x1.5 RHT / DIA 16mm
701 419 810A	•			•	•	RACK END / M 16x1.5 RHT / LHD .RHD
701 419 810	•			•	•	RACK END / M 16x1.5 RHT (old type with boot only for left side)

VOLKSWAGEN

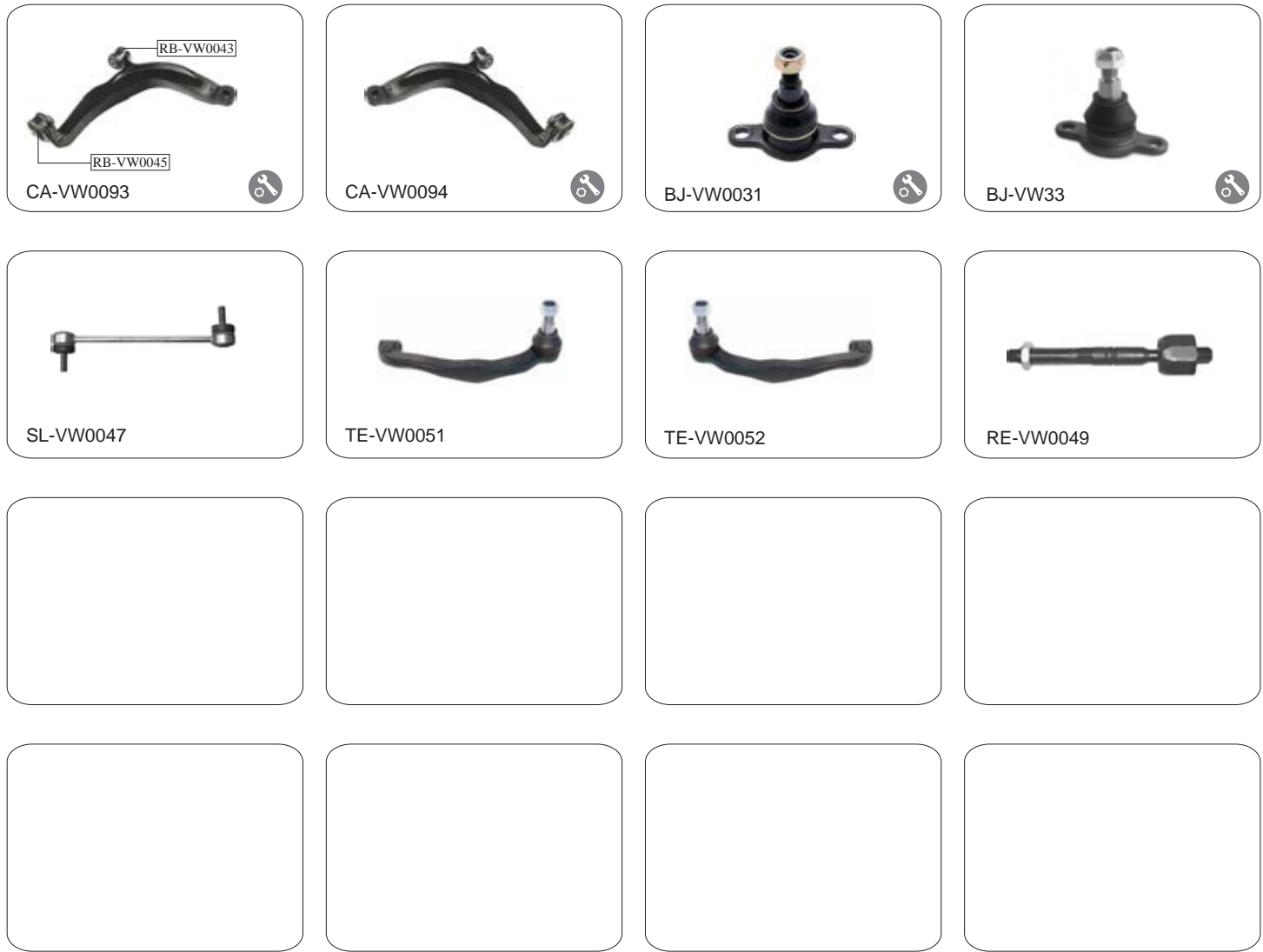
TRANSPORTER IV (T4)

1996-2002



OE NO.		↑	↓	L	R	Description
7D1 407 151A	•			•		CONTROL ARM / CASTING
7D1 407 152A	•				•	CONTROL ARM / CASTING
701 407 361B	•			•	•	BALL JOINT
701 411 049	•			•	•	STABILIZER LINK / DIA 23mm
701 411 049B	•			•	•	STABILIZER LINK / DIA 27mm
701 419 811C	•			•		TIE ROD END / M16x1.5 RHT / DIA 18mm
701 419 812B	•				•	TIE ROD END / M16x1.5 RHT / DIA 18mm
701 419 810A	•			•	•	RACK END / M 16x1.5 RHT / LHD .RHD
701 419 810	•			•	•	RACK END / M 16x1.5 RHT (old type with boot only for left side)

<h1>VOLKSWAGEN</h1>	<h1>TRANSPORTER V (T5)</h1>	2003-
---------------------	-----------------------------	-------



OE NO.	🚗	↑	↓	L	R	Description
7H0 407 151G	•			•		CONTROL ARM / CASTING
7H0 407 152G	•				•	CONTROL ARM / CASTING
7H8 407 361A	•			•	•	BALL JOINT / VAN MODELS
7H8 407 361	•			•	•	BALL JOINT / CHASSIS CAB MODELS
7H0 411 317	•			•	•	STABILIZER LINK
7H0 422 817C	•			•		TIE ROD END / M16x1.5 RHT
7H0 422 818C	•				•	TIE ROD END / M16x1.5 RHT
7H0 419 821D	•			•	•	RACK END / M16x1.5 RHT