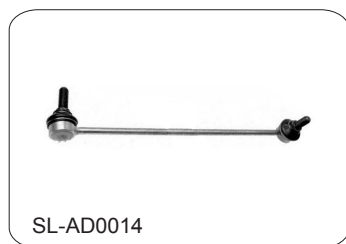
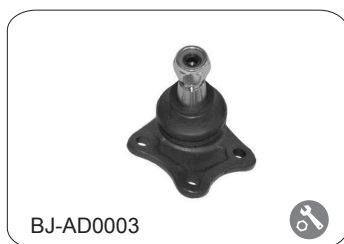
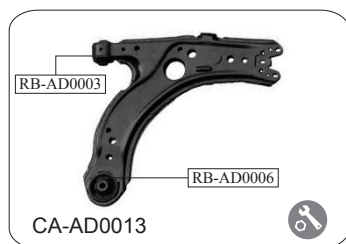




AUDI	A3 (8L)	1996-2003
------	---------	-----------



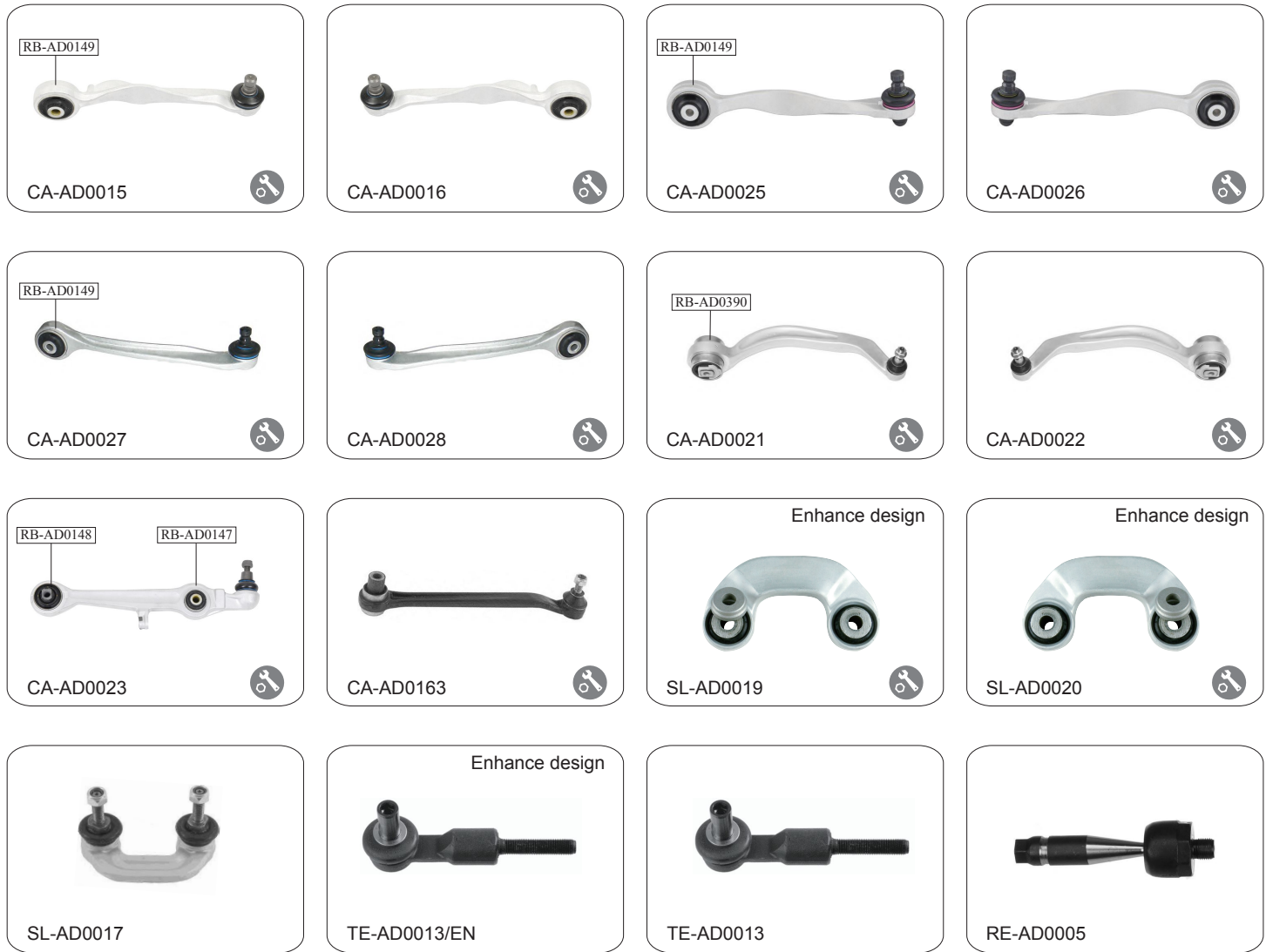
OE NO.		↑	↓	L	R	Description
1J0 407 151A	•		•	•		CONTROL ARM / METAL
1J0 407 152A	•		•		•	CONTROL ARM / METAL
1J0 407 365D	•		•	•		BALL JOINT / DIA 15mm
1J0 407 366D	•		•		•	BALL JOINT / DIA 15mm
1J0 411 315C	•			•	•	STABILIZER LINK / PLASTIC TYPE
1J0 411 315D	•			•		STABILIZER LINK / MOD.QUATTRO
1J0 411 316D	•				•	STABILIZER LINK / MOD.QUATTRO
1J0 411 315G	•			•	•	STABILIZER LINK / STEEL TYPE
1J0 422 811A	•			•		TIE ROD END / M14x1.5 / RHT
1J0 422 812A	•				•	TIE ROD END / M14x1.5 / RHT
1J0 422 807	•			•	•	RACK END / M14x1.5 / RHT / L:360mm


AUDI	A3 (8P)	2003-2013
-------------	----------------	------------------



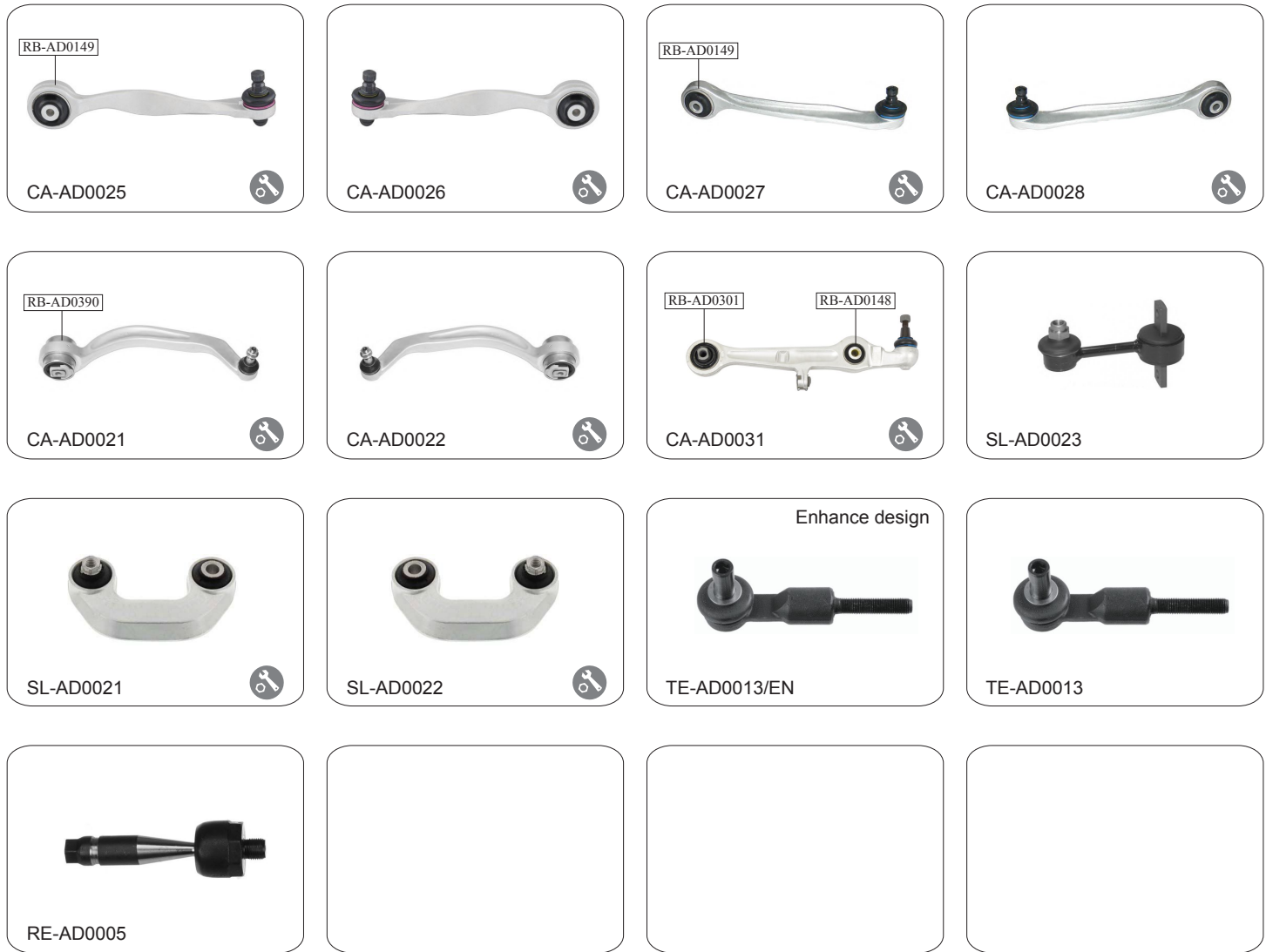
OE NO.		↑	↓	L	R	Description
1K0 407 151M	•			•	•	CONTROL ARM / CASTIRON FORGING
1K0 407 152M	•			•	•	CONTROL ARM / CASTIRON FORGING
1K0 407 151P	•			•	•	CONTROL ARM / GASOLINE ENGINE
1K0 407 152P	•			•	•	CONTROL ARM / GASOLINE ENGINE
1K0 505 323H		•		•	•	CONTROL ARM
1K0 501 529F		•		•		CONTROL ARM
1K0 501 530C		•			•	CONTROL ARM
1K0 407 365C	•			•	•	BALL JOINT
1K0 407 366C	•			•	•	BALL JOINT
1K0 199 231G	•			•	•	ARM SUPPORT
1K0 199 232G	•			•	•	ARM SUPPORT
1K0 411 315B	•			•	•	STABILIZER LINK
1K0 505 465J	•			•	•	STABILIZER LINK
1K0 423 811A	•			•		TIE ROD END
1K0 423 812A	•				•	TIE ROD END
1K0 423 810A	•			•	•	RACK END / M16x1.5 RHT


AUDI	A4 (B5)	1995-2001
-------------	----------------	------------------



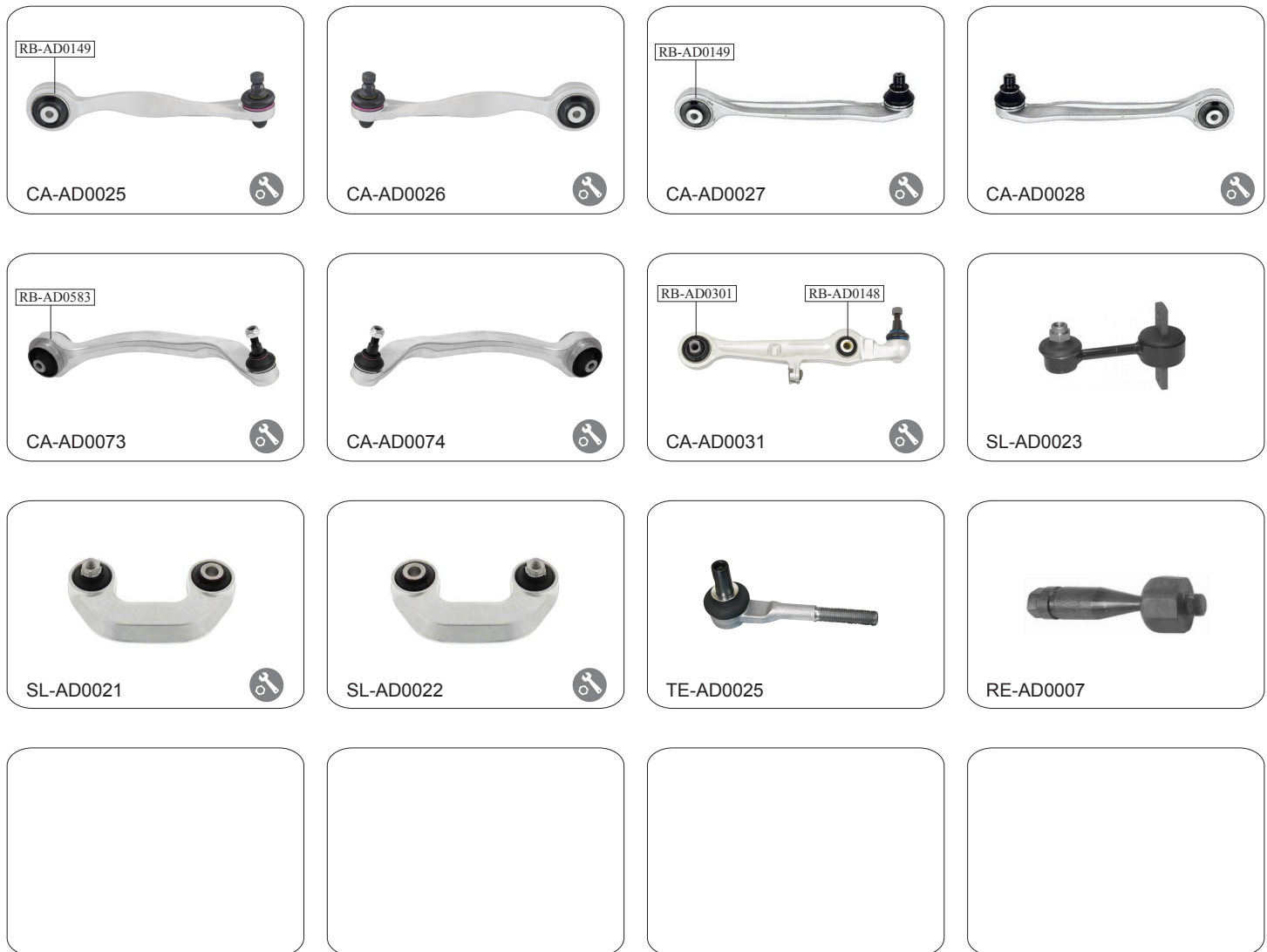
OE NO.		↑	↓	L	R	Description
4D0 407 509D	•	•		•		CONTROL ARM / ALUMINUM
4D0 407 510D	•	•			•	CONTROL ARM / ALUMINUM
8E0 407 509A	•	•		•		CONTROL ARM / ALUMINUM
8E0 407 510A	•	•			•	CONTROL ARM / ALUMINUM
8E0 407 505B	•	•		•		CONTROL ARM / ALUMINUM
8E0 407 506B	•	•			•	CONTROL ARM / ALUMINUM
4D0 407 693N	•			•	•	CONTROL ARM / ALUMINUM
4D0 407 694N	•			•	•	CONTROL ARM / ALUMINUM
4D0 407 151P	•			•	•	CONTROL ARM / ALUMINUM
8D0 501 530		•		•	•	CONTROL ARM
8D0 411 317D	•			•		STABILIZER LINK / ALUMINUM
8D0 411 318D	•				•	STABILIZER LINK / ALUMINUM
4D0 411 317J	•			•	•	STABILIZER LINK / ALUMINUM
4B0 419 811E	•			•	•	OUTER TIE ROD END / M 14x1.5 RHT / Enhanced
4D0 422 821	•			•	•	RACK END / M 14x1.5 RHT


AUDI	A4 (B6)	2001-2006
-------------	----------------	------------------



OE NO.		↑	↓	L	R	Description
8E0 407 509A	•	•	•	•		CONTROL ARM / ALUMINUM
8E0 407 510A	•		•		•	CONTROL ARM / ALUMINUM
8E0 407 505A	•		•		•	CONTROL ARM / ALUMINUM
8E0 407 506A	•		•		•	CONTROL ARM / ALUMINUM
4D0 407 693N	•			•	•	CONTROL ARM / ALUMINUM
4D0 407 694N	•			•	•	CONTROL ARM / ALUMINUM
8E0 407 151M	•			•	•	CONTROL ARM / ALUMINUM
8E0 411 317	•				•	STABILIZER LINK / ALUMINUM
8E0 411 318	•				•	STABILIZER LINK / ALUMINUM
8E0 505 465K		•		•	•	STABILIZER LINK / ALUMINUM
4B0 419 811E	•			•	•	TIE ROD END / M14x1.5 RHT / Enhanced
4B0 419 811E	•			•	•	TIE ROD END / M14x1.5 RHT
4D0 422 821	•			•	•	RACK END / M14x1.5 RHT

AUDI	A4 (B7)	2004-2009
-------------	----------------	------------------



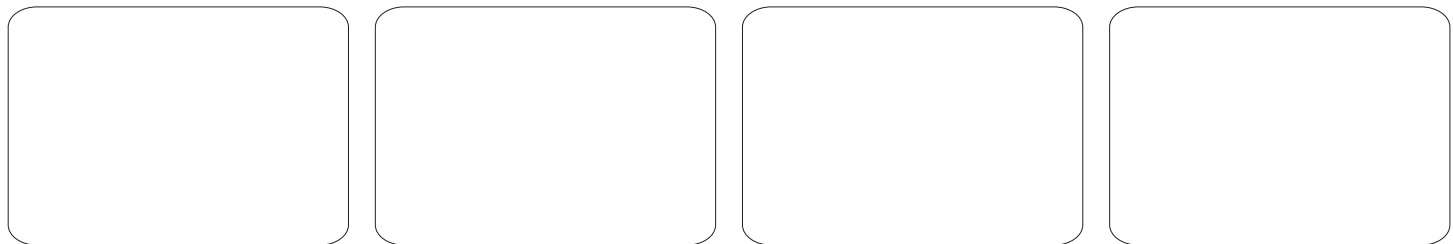
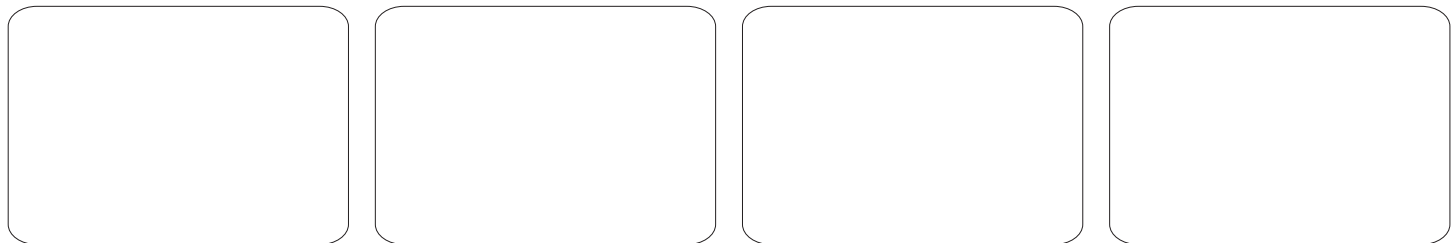
OE NO.			↑	↓	L	R	Description
8E0 407 509A	•		•		•		CONTROL ARM / ALUMINUM
8E0 407 510A	•		•			•	CONTROL ARM / ALUMINUM
8E0 407 505A	•		•		•		CONTROL ARM / ALUMINUM
8E0 407 506A	•		•			•	CONTROL ARM / ALUMINUM
8E0 407 693T	•			•	•		CONTROL ARM / ALUMINUM
8E0 407 694T	•			•		•	CONTROL ARM / ALUMINUM
8E0 407 151M	•			•	•	•	CONTROL ARM / ALUMINUM
8E0 411 317	•					•	STABILIZER LINK/ ALUMINUM
8E0 411 318	•					•	STABILIZER LINK/ ALUMINUM
8E0 505 465K		•			•	•	STABILIZER LINK
4F0 419 811C	•				•	•	TIE ROD END / M14x1.5 RHT
8E0 422 821	•				•	•	RACK END / M14x1.5 RHT

AUDI	A4 (B8)	2008-2016
-------------	----------------	------------------



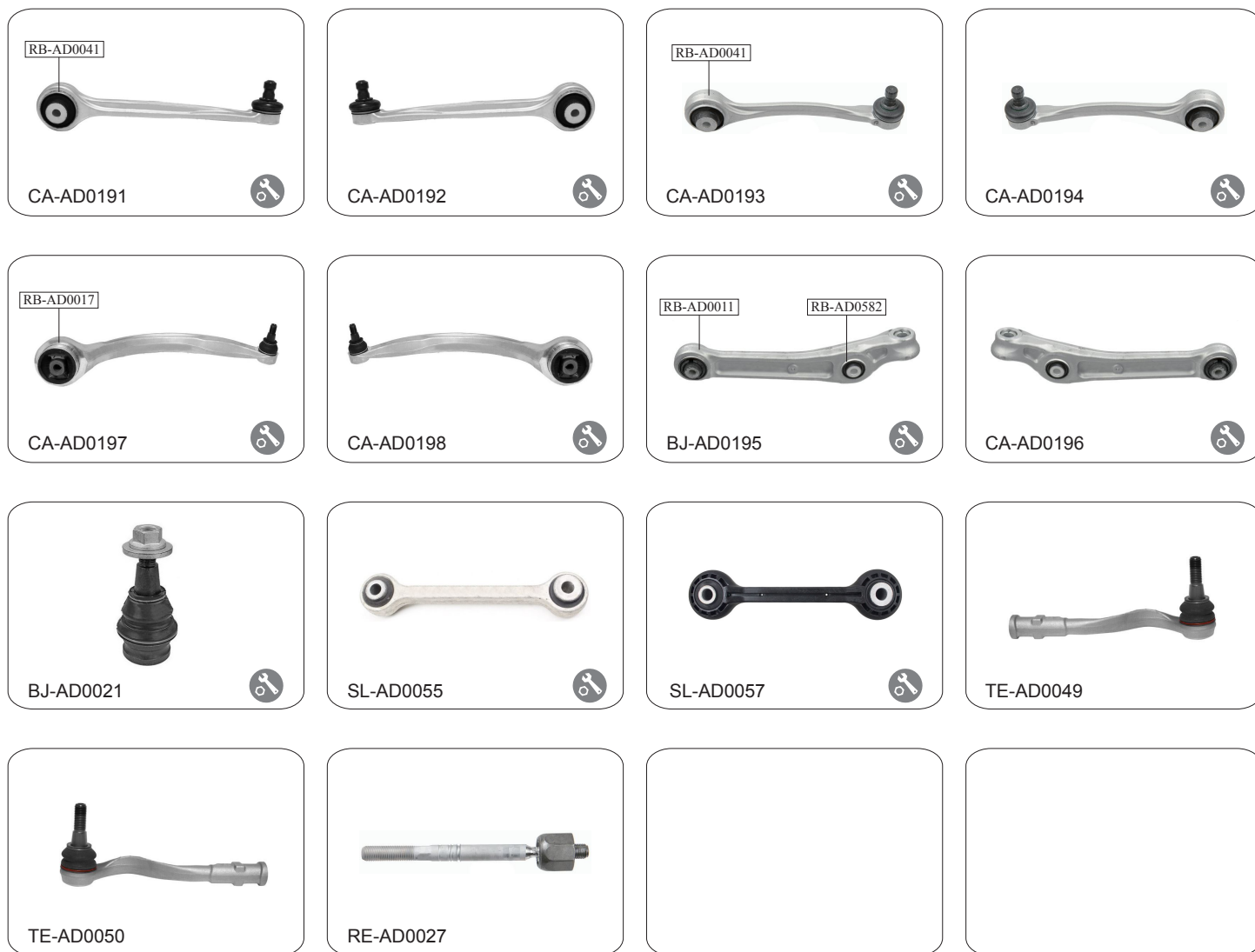
OE NO.		↑	↓	L	R	Description
8K0 407 509A	•	•		•		CONTROL ARM / ALUMINUM
8K0 407 510A	•	•			•	CONTROL ARM / ALUMINUM
8K0 407 505A	•	•		•		CONTROL ARM / ALUMINUM
8K0 407 506A	•	•			•	CONTROL ARM / ALUMINUM
8K0 407 693K	•			•	•	CONTROL ARM / ALUMINUM / Ø 14.4 / M12*1.5
8K0 407 694K	•			•	•	CONTROL ARM / ALUMINUM / Ø 14.4 / M12*1.5
8K0 407 693T	•			•	•	CONTROL ARM / ALUMINUM / Ø 17 / M14*1.5
8K0 407 694T	•			•	•	CONTROL ARM / ALUMINUM / Ø 17 / M14*1.5
8K0 407 151B	•			•	•	CONTROL ARM / ALUMINUM / Ø 13.8
8K0 407 152B	•			•	•	CONTROL ARM / ALUMINUM / Ø 13.8
8K0 407 151F	•			•	•	CONTROL ARM / ALUMINUM / Ø 17
8K0 407 152F	•			•	•	CONTROL ARM / ALUMINUM / Ø 17
8K0 407 689F	•			•	•	BALL JOINT / Ø 13.8
4G0 407 689	•			•	•	BALL JOINT / Ø 17
8K0 505 323F	•			•		CONTROL ARM
8K0 505 324F	•				•	CONTROL ARM

AUDI	A4 (B8)	2008-2016
------	---------	-----------



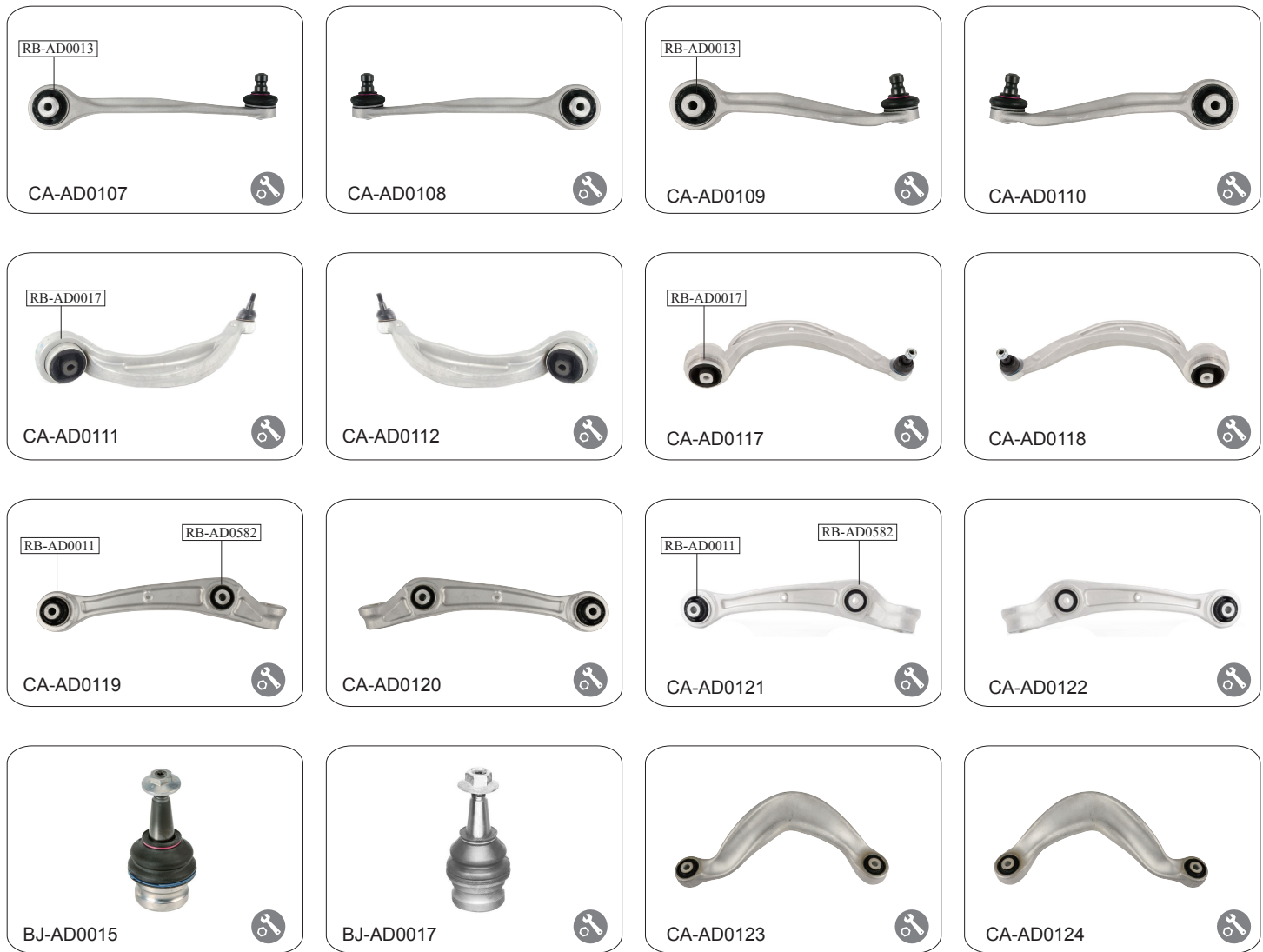
OE NO.		↑	↓	L	R	Description
8K0 501 529K	•			•		CONTROL ARM / ALUMINUM
8K0 501 530K	•				•	CONTROL ARM / ALUMINUM
4G0 411 317A	•			•	•	STABILIZER LINK / ALUMINUM L:170mm
8K0 411 317D	•			•	•	STABILIZER LINK / PLASTIC L:170mm
8K0 505 365B				•	•	AXLE JOINT
8K0 422 817A	•			•		TIE ROD END / M16*1.5
8K0 422 818A	•				•	TIE ROD END / M16*1.5
8J0 423 810	•			•	•	RACK END / M16*1.5

AUDI	A4 (B9)	2016-
-------------	----------------	--------------



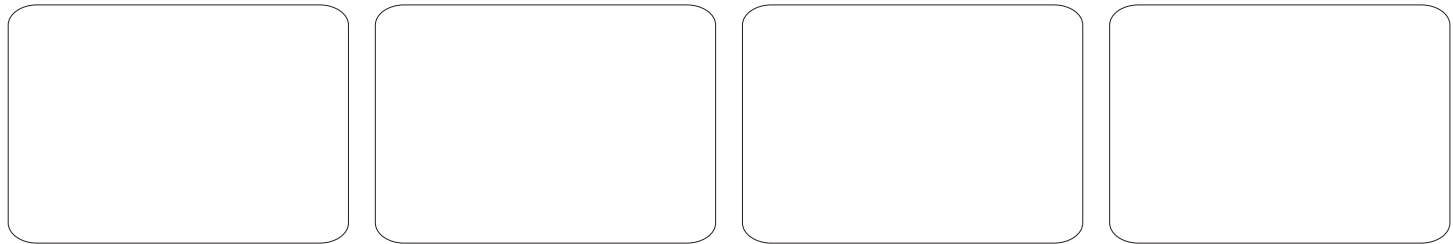
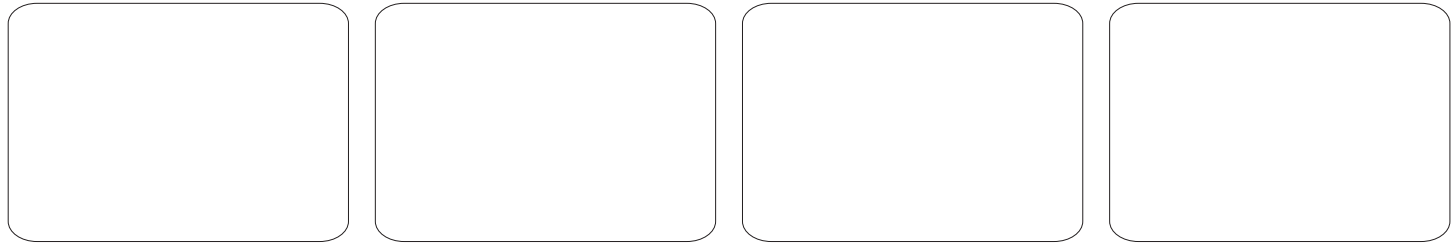
OE NO.	🚗	↑	↓	L	R	Description
8W0 407 505C	•	•		•		CONTROL ARM
8W0 407 506C	•	•			•	CONTROL ARM
8W0 407 509B	•	•		•		CONTROL ARM
8W0 407 510B	•	•			•	CONTROL ARM
8W0 407 693B	•		•	•		CONTROL ARM
8W0 407 694B	•		•		•	CONTROL ARM
8W0 407 151A	•		•	•		CONTROL ARM
8W0 407 152A	•		•		•	CONTROL ARM
8W0 407 689A	•		•	•	•	BALL JOINT
4G0 411 317A	•			•	•	STABILIZER LINK / ALUMINIUM
8K0 411 317D	•			•	•	STABILIZER LINK / PLASTIC
8W0 423 811B	•			•		TIE ROD END
8W0 423 812B	•				•	TIE ROD END
8W0 423 810	•			•	•	RACK END


AUDI	A5 (8T)	2007-2016
-------------	----------------	------------------



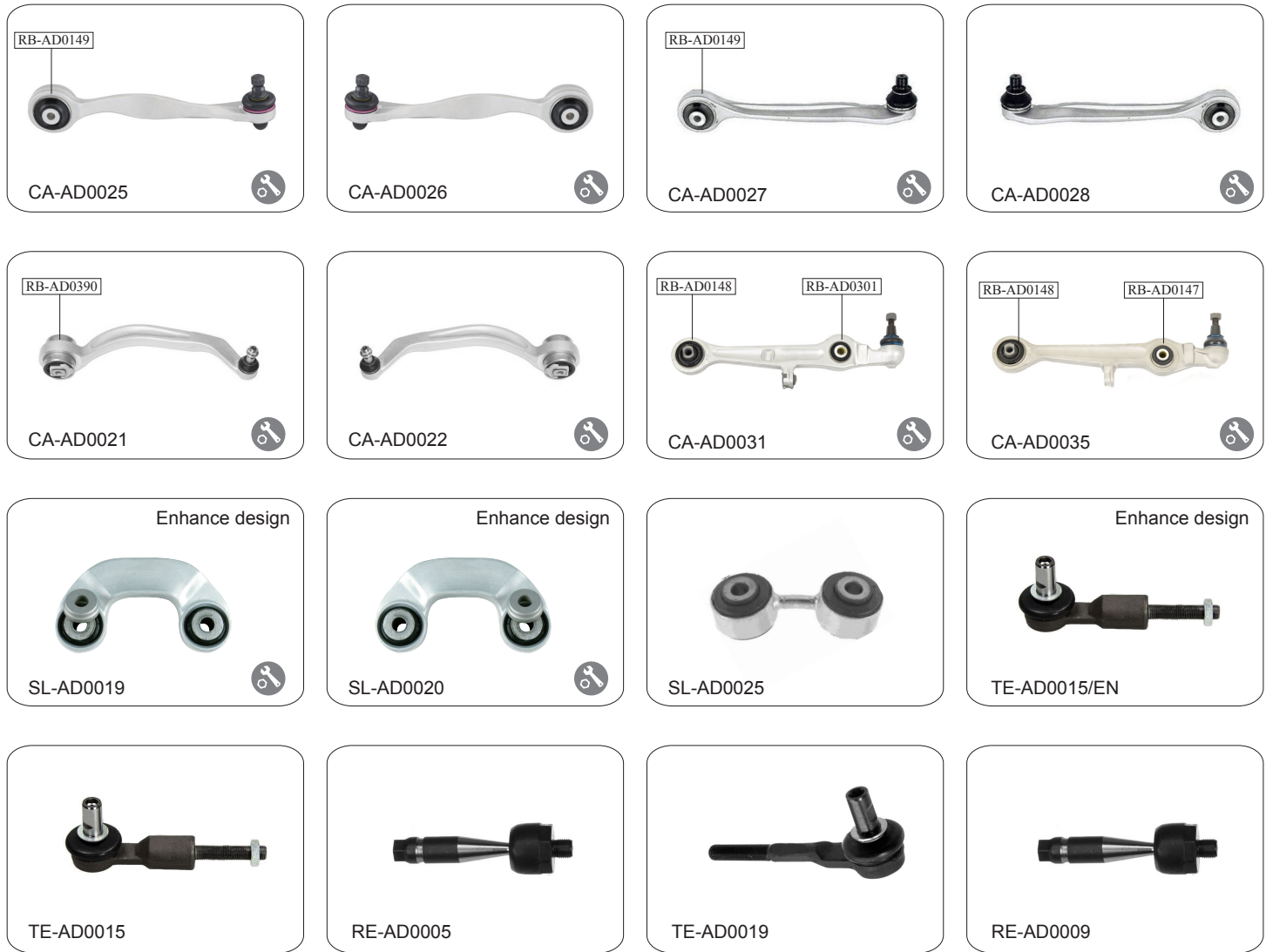
OE NO.		↑	↓	L	R	Description
8K0 407 509A	●	●		●		CONTROL ARM / ALUMINUM
8K0 407 510A	●	●			●	CONTROL ARM / ALUMINUM
8K0 407 505A	●	●		●		CONTROL ARM / ALUMINUM
8K0 407 506A	●	●			●	CONTROL ARM / ALUMINUM
8K0 407 693K	●		●	●		CONTROL ARM / Ø 14.4 / M12*1.5
8K0 407 694K	●		●		●	CONTROL ARM / Ø 14.4 / M12*1.5
8K0 407 693T	●		●	●		CONTROL ARM / Ø 17 / M14*1.5
8K0 407 694T	●		●		●	CONTROL ARM / Ø 17 / M14*1.5
8K0 407 151B	●		●	●		CONTROL ARM / Ø 13.8
8K0 407 152B	●		●		●	CONTROL ARM / Ø 13.8
8K0 407 151F	●		●	●		CONTROL ARM / Ø 17
8K0 407 152F	●		●		●	CONTROL ARM / Ø 17
8K0 407 689F	●		●	●	●	BALL JOINT / Ø 13.8
4G0 407 689	●		●	●	●	BALL JOINT / Ø 17
8K0 505 323F		●			●	CONTROL ARM
8K0 505 324F		●			●	CONTROL ARM

AUDI	A5 (8T)	2007-2016
------	---------	-----------



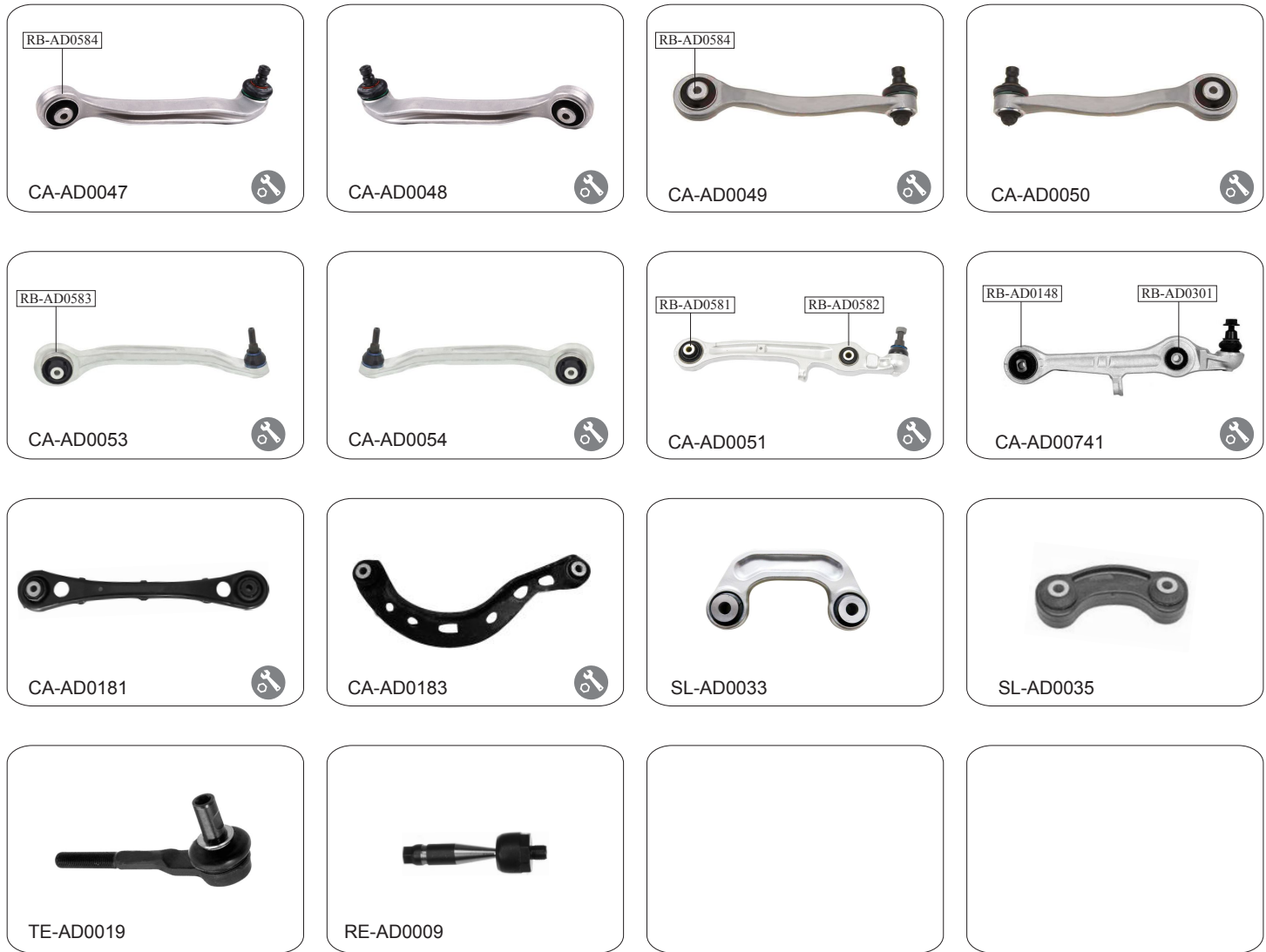
OE NO.		↑	↓	L	R	Description
8K0 501 529K		•			•	CONTROL ARM
8K0 501 530K		•			•	CONTROL ARM
4G0 411 317A	•			•	•	STABILIZER LINK / ALUMINUM L:170mm
8K0 411 317D	•			•	•	STABILIZER LINK / PLASTIC L:170mm
8K0 505 365B				•	•	AXLE JOINT
8K0 422 817A	•				•	TIE ROD END / M16*1.5
8K0 422 818A	•				•	TIE ROD END / M16*1.5
8J0 423 810	•				•	RACK END / M16*1.5


AUDI	A6 (C5) ALLROOD	1997-2004 2000-2005
-------------	----------------------------	--------------------------------



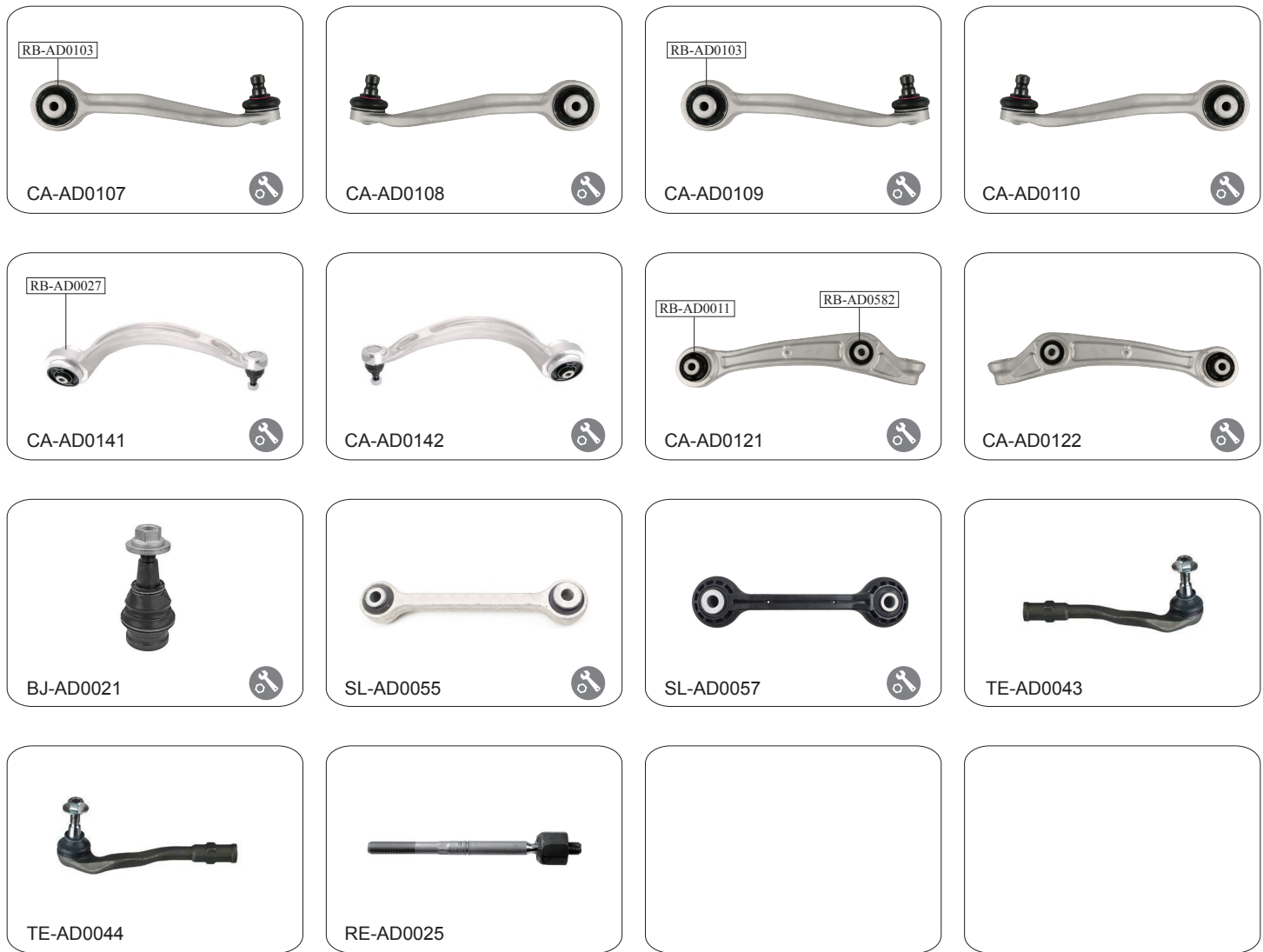
OE NO.		↑	↓	L	R	Description
8E0 407 509A	•	•		•		CONTROL ARM / ALUMINUM
8E0 407 510A	•	•			•	CONTROL ARM / ALUMINUM
8E0 407 505A	•	•		•		CONTROL ARM / ALUMINUM
8E0 407 506A	•	•			•	CONTROL ARM / ALUMINUM
4D0 407 693N	•	•		•		CONTROL ARM / ALUMINUM
4D0 407 694N	•	•			•	CONTROL ARM / ALUMINUM
8E0 407 151M	•			•	•	CONTROL ARM / ALUMINUM
4B3 407 151F	•			•	•	CONTROL ARM / ALUMINUM / ONLY FOR 8 CYLIDE
8D0 411 317D	•				•	STABILIZER LINK / ALUMINUM
8D0 411 318D	•				•	STABILIZER LINK / ALUMINUM
8E0 505 465D		•		•	•	STABILIZER LINK
8E0 419 811B	•			•	•	TIE ROD END / M14x1.5 RHT / Enhanced
8E0 419 811B	•			•	•	TIE ROD END / M14x1.5 RHT
8E0 419 811	•			•	•	TIE ROD END / M14x1.5 RHT
4D0 422 821	•			•	•	RACK END / M14x1.5 RHT
4F0 422 821	•			•	•	RACK END / M14x1.5 RHT


AUDI	A6 (C6)	2004-2011
-------------	----------------	------------------



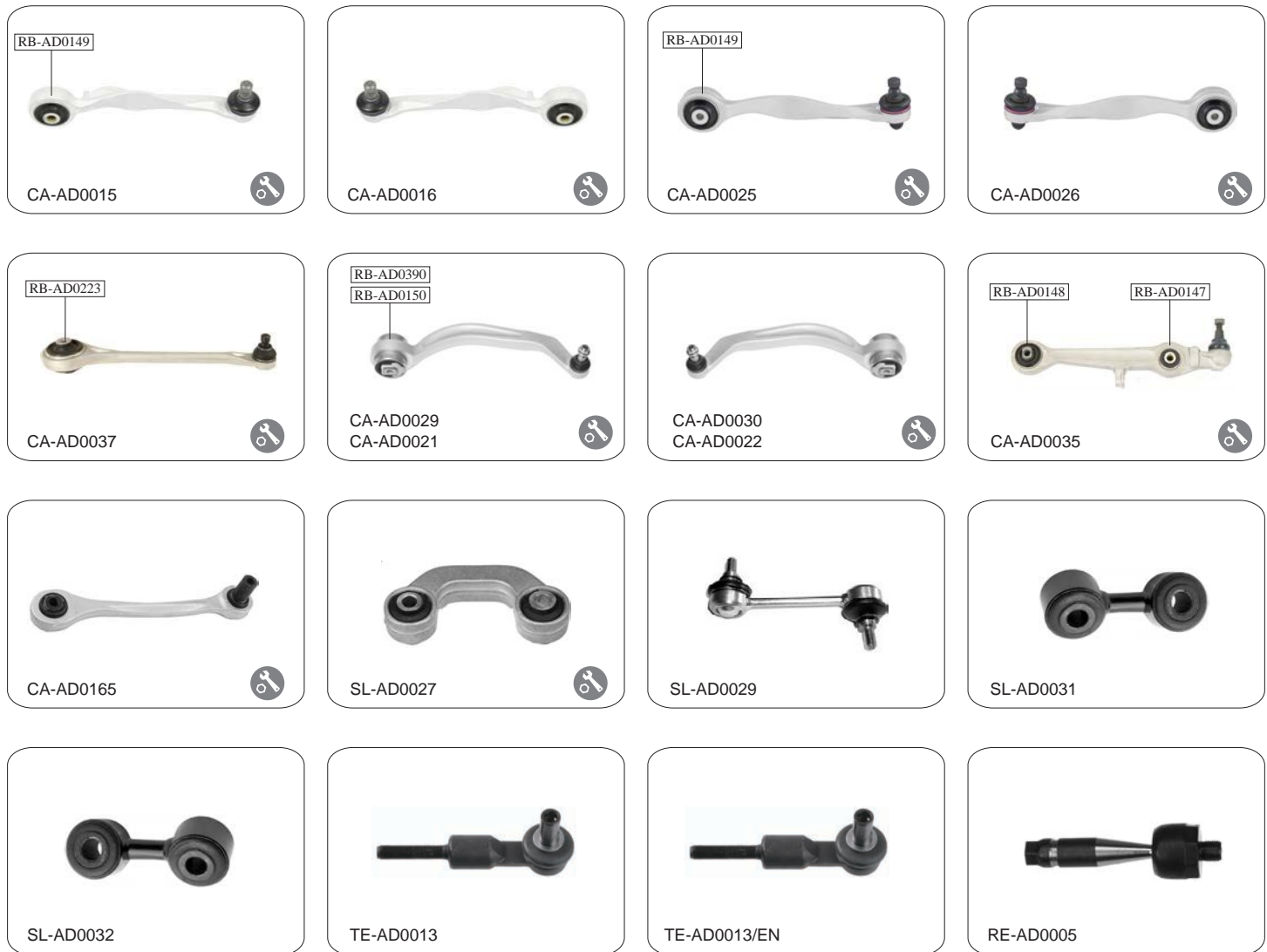
OE NO.		↑	↓	L	R	Description
4E0 407 505B	•	•		•		CONTROL ARM / ALUMINUM
4E0 407 506B	•	•			•	CONTROL ARM / ALUMINUM
4E0 407 509B	•	•		•		CONTROL ARM / ALUMINUM
4E0 407 510B	•	•			•	CONTROL ARM / ALUMINUM
4F0 407 693B	•		•	•		CONTROL ARM / ALUMINUM
4F0 407 694B	•		•		•	CONTROL ARM / ALUMINUM
4F0 407 151	•		•	•	•	CONTROL ARM / ALUMINUM
4Z7 407 151C	•		•	•	•	CONTROL ARM / ALUMINUM
4F0 501 529C		•		•	•	CONTROL ARM
4F0 505 323E		•		•	•	CONTROL ARM
4E0 411 317E	•			•	•	STABILIZER LINK / ALUMINUM
4F0 505 465N		•		•	•	STABILIZER LINK / PLASTIC
8E0 419 811	•			•	•	TIE ROD END / M 14x1.5 RHT
4F0 422 821	•			•	•	RACK END

AUDI	A6 (C7)	2011-2018
-------------	----------------	------------------



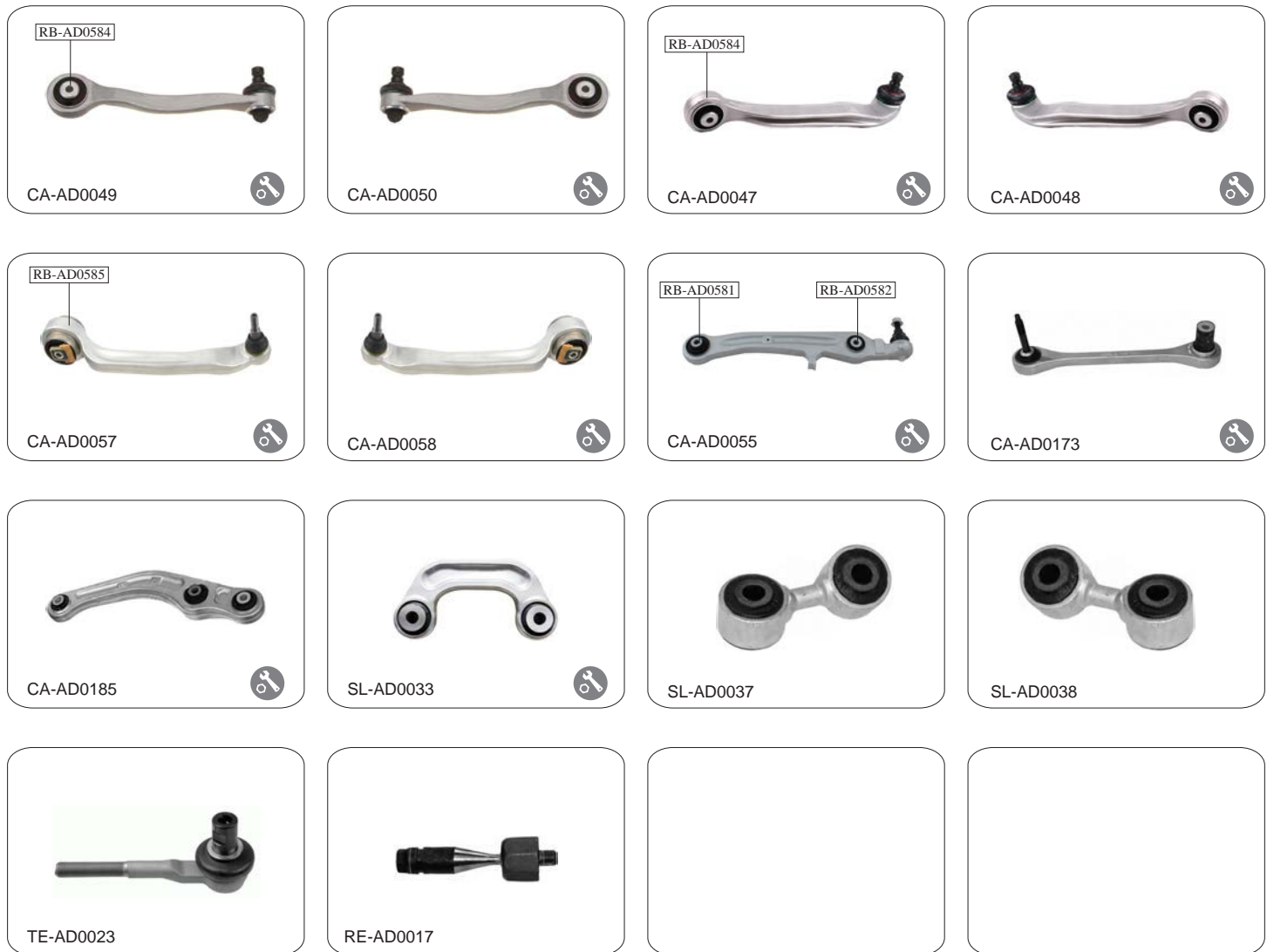
OE NO.		↑	↓	L	R	Description
8K 0 407 509A	•	•		•		CONTROL ARM
8K0 407 510A	•	•			•	CONTROL ARM
8K0 407 505A	•	•		•		CONTROL ARM
8K0 407 506A	•	•			•	CONTROL ARM
4G0 407 693D	•		•	•		CONTROL ARM
4G0 407 694D	•		•		•	CONTROL ARM
8K0 407 151F	•		•	•		CONTROL ARM / Ø17.2
8K0 407 152F	•		•		•	CONTROL ARM / Ø17.2
8W0 407 689A	•		•	•	•	BALL JOINT / Ø 17.2
4G0 411 317A	•			•	•	STABILIZER LINK / ALUMINIUM
8K0 411 317D	•			•	•	STABILIZER LINK / PLASTIC
4G0 423 811A	•			•		TIE ROD END
4G0 423 812A	•				•	TIE ROD END
4G0 423 810A	•			•	•	RACK END


AUDI	A8 (4D)	1994-2002
-------------	----------------	------------------



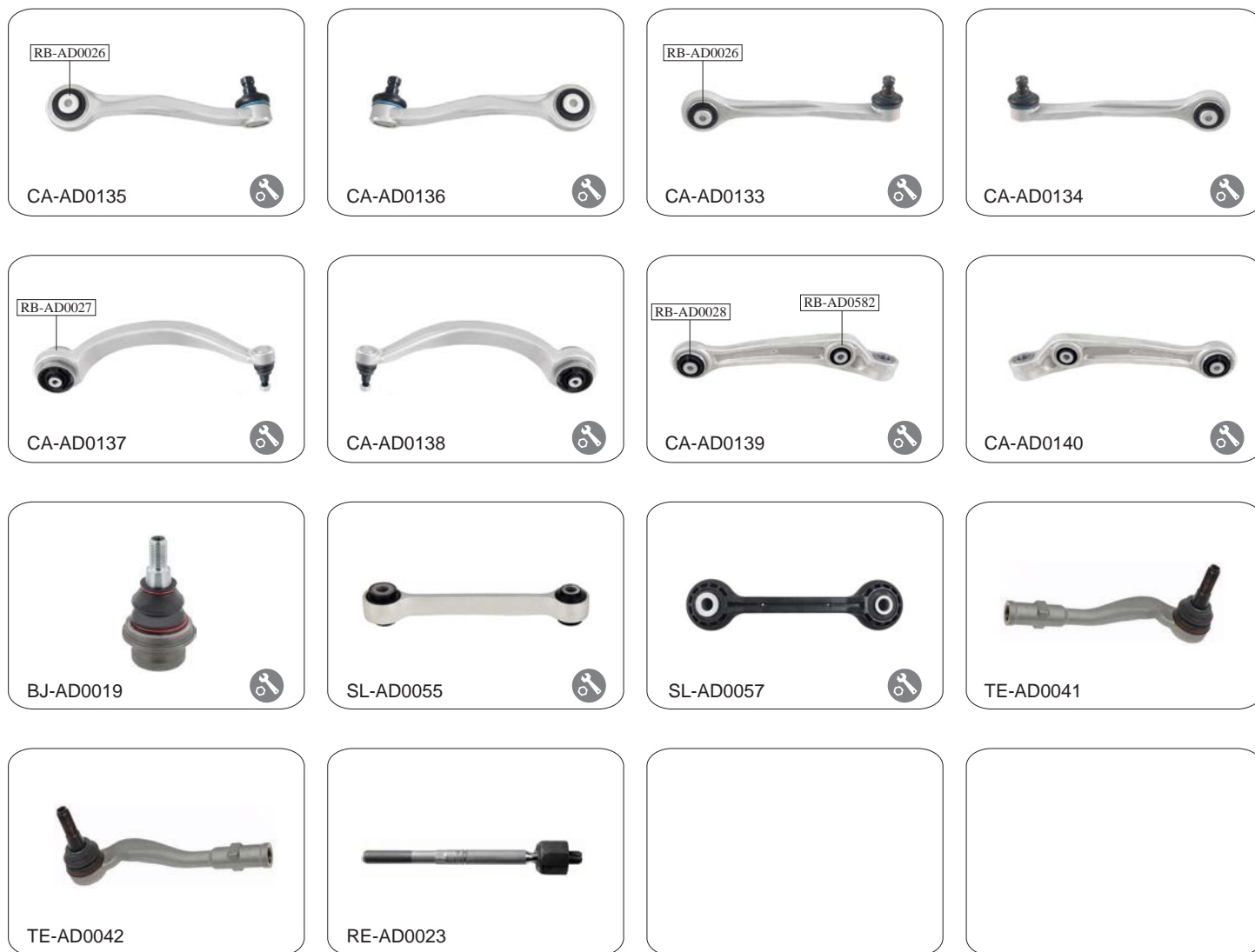
RT NO.	RT NO.	OE NO.	🚗	↑	↓	L	R	Description
CA-AD0015	CA-AD0015K	4D0 407 509D	•	•	•			CONTROL ARM / ALUMINUM
CA-AD0016	CA-AD0016K	4D0 407 510D	•	•			•	CONTROL ARM / ALUMINUM
CA-AD0025	CA-AD0025K	8E0 407 509A	•	•			•	CONTROL ARM / ALUMINUM
CA-AD0026	CA-AD0026K	8E0 407 510A	•	•			•	CONTROL ARM / ALUMINUM
CA-AD0037	CA-AD0037K	4D0 407 505H	•	•			• •	CONTROL ARM / ALUMINUM
CA-AD0029	CA-AD0029K	8E0 407 693P	•		•		•	CONTROL ARM / ALUMINUM
CA-AD0030	CA-AD0030K	8E0 407 694P	•		•		•	CONTROL ARM / ALUMINUM
CA-AD0021	CA-AD0021K	4D0 407 693N	•		•		•	CONTROL ARM / ALUMINUM
CA-AD0022	CA-AD0022K	4D0 407 694N	•		•		•	CONTROL ARM / ALUMINUM
CA-AD0035	CA-AD0035K	4B3 407 151F	•		•		• •	CONTROL ARM / ALUMINUM
CA-AD0165	CA-AD0165K	4D0 504 529F		•			• •	CONTROL ARM / ALUMINUM
SL-AD0027	SL-AD0027K	4D0 411 317K	•				• •	STABILIZER LINK / ALUMINUM
SL-AD0029		4D0 505 465D	•				• •	STABILIZER LINK
SL-AD0031		4D0 505 547C		•			•	STABILIZER LINK
SL-AD0032		4D0 505 548C		•			•	STABILIZER LINK
TE-AD0013/EN		4B0 419 811E	•				• •	TIE ROD END / M14x1.5 RHT / Enhanced
RE-AD0005		4D0 422 821	•				• •	RACK END / M14x1.5 RHT

AUDI	A8 (4E)	2002-2008
-------------	----------------	------------------



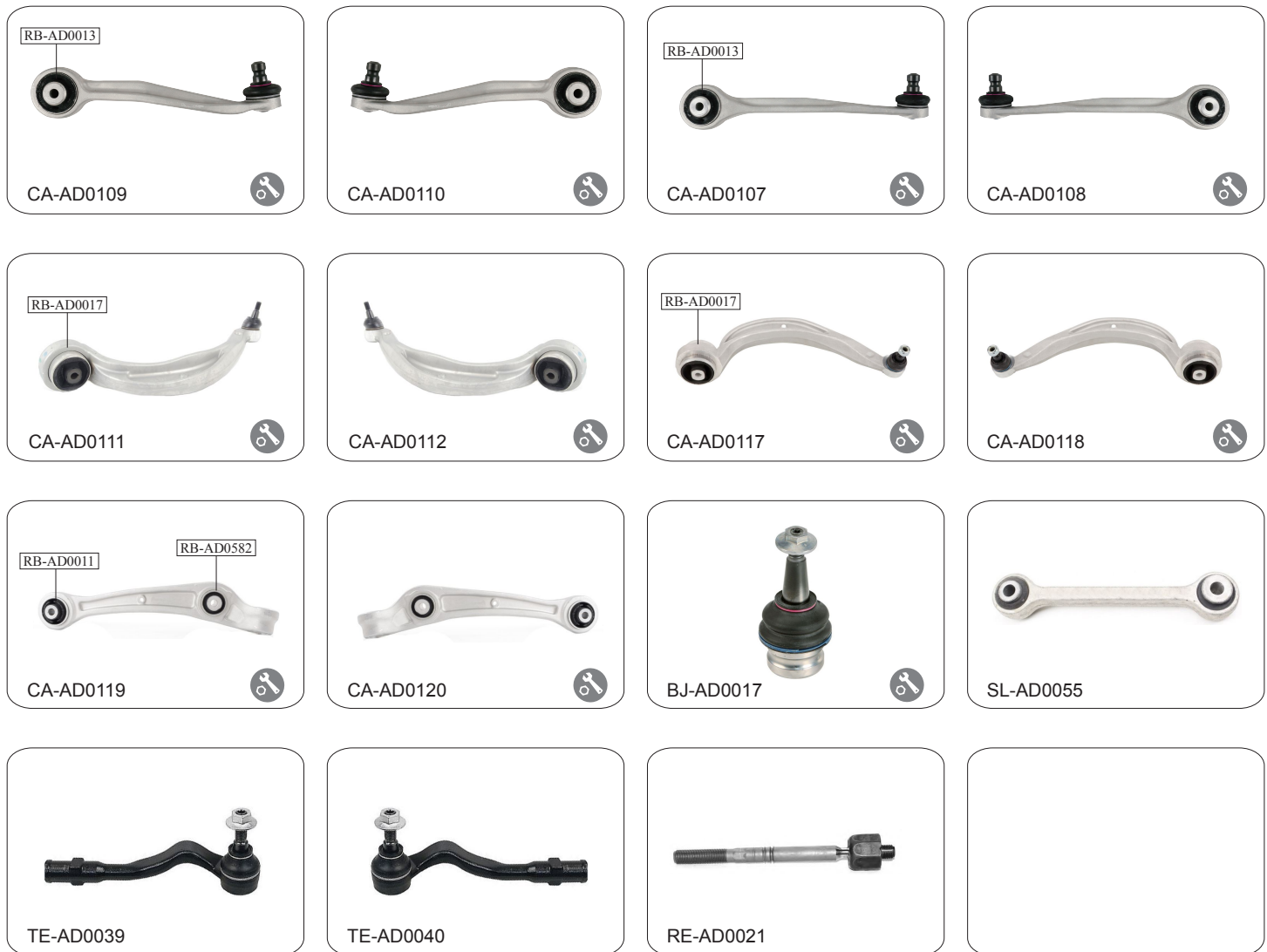
OE NO.		↑	↓	L	R	Description
4E0 407 505B	•		•	•		CONTROL ARM / ALUMINUM
4E0 407 506B	•		•		•	CONTROL ARM / ALUMINUM
4E0 407 509B	•		•	•		CONTROL ARM / ALUMINUM
4E0 407 510B	•		•		•	CONTROL ARM / ALUMINUM
4F0 407 693B	•			•	•	CONTROL ARM / ALUMINUM
4F0 407 694B	•			•	•	CONTROL ARM / ALUMINUM
4F0 407 151	•			•	•	CONTROL ARM / ALUMINUM
4E0 501 529D		•		•	•	CONTROL ARM / ALUMINUM
4E0 505 323Q		•		•	•	CONTROL ARM / ALUMINUM
4E0 411 317E	•			•	•	STABILIZER LINK / ALUMINUM
4E0 505 547A	•			•		STABILIZER LINK
4E0 505 548A	•				•	STABILIZER LINK
4E0 419 811D	•			•	•	TIE ROD / M 16x1.5 RHT
4E0 419 821	•			•	•	RACK END / M 16x1.5 RHT


AUDI	A8 (4H)	2009 >
-------------	----------------	------------------



OE NO.	◀	▶	↑	↓	L	R	Description
4H0 407 505E	•		•		•		CONTROL ARM
4H0 407 506E	•		•			•	CONTROL ARM
4H0 407 509E	•		•		•		CONTROL ARM
4H0 407 510E	•		•			•	CONTROL ARM
4H0 407 693C	•			•	•		CONTROL ARM
4H0 407 694C	•			•		•	CONTROL ARM
4H0 407 151B	•			•	•		CONTROL ARM / Ø18.1
4H0 407 152B	•			•		•	CONTROL ARM / Ø18.1
4H0 407 689	•			•	•	•	BALL JOINT
8K0 411 317E	•				•	•	STABILIZER LINK / ALUMINIUM
8K0 411 317E	•				•	•	STABILIZER LINK / PLASTIC
4H0 422 817A	•				•		TIE ROD END
4H0 422 818A	•					•	TIE ROD END
4G0 423 810A	•				•	•	RACK END


AUDI	Q5 8R	2008-2017
------	-------	-----------



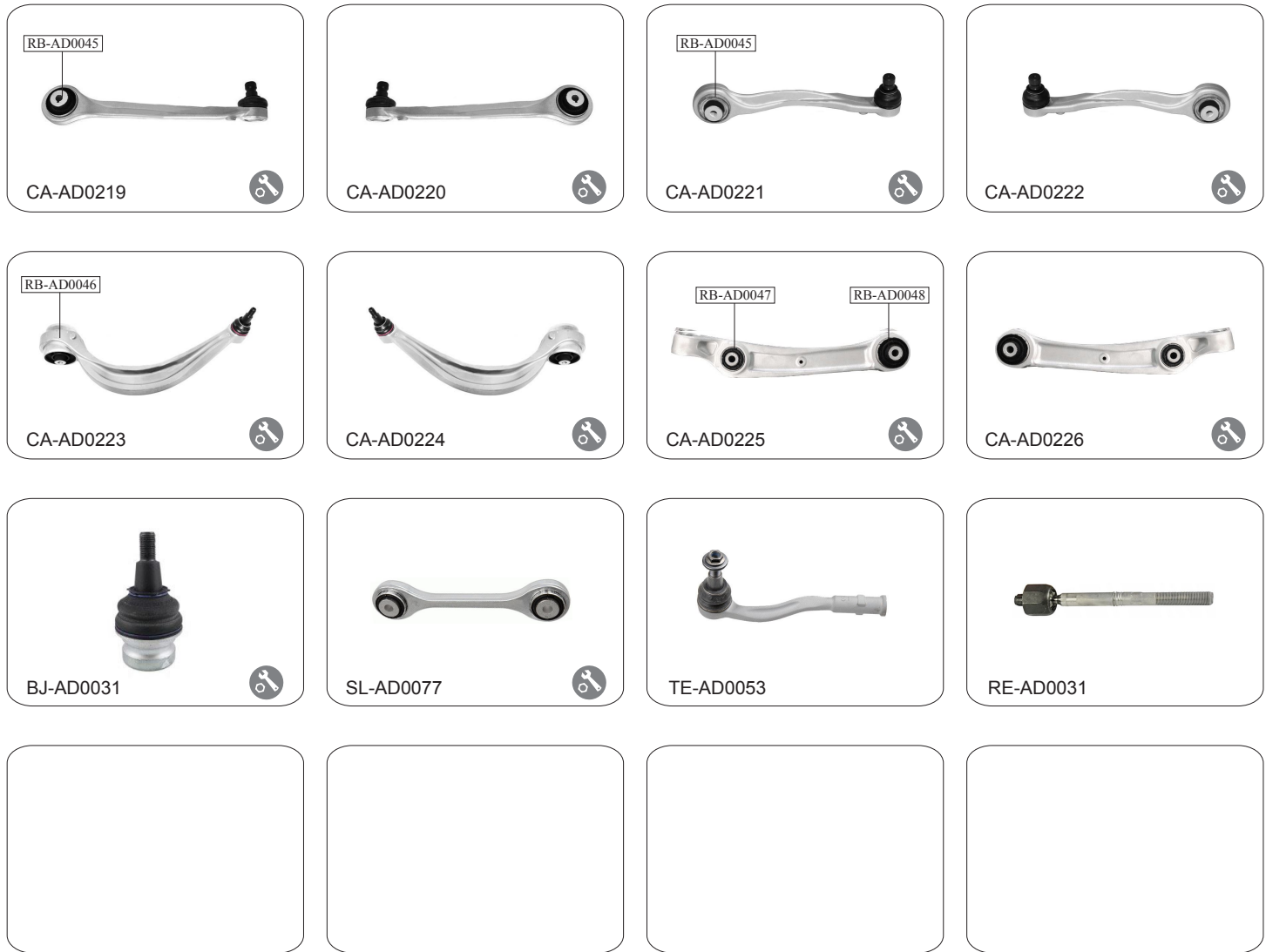
OE NO.		↑	↓	L	R	Description
8K0 407 509A	•	•		•		CONTROL ARM / ALUMINUM
8K0 407 510A	•	•			•	CONTROL ARM / ALUMINUM
8K0 407 505A	•	•		•		CONTROL ARM / ALUMINUM
8K0 407 506A	•	•			•	CONTROL ARM / ALUMINUM
8K0 407 693K	•		•	•		CONTROL ARM / ALUMINUM
8K0 407 694K	•		•		•	CONTROL ARM / ALUMINUM
8K0 407 693T	•		•	•		CONTROL ARM / ALUMINUM
8K0 407 694T	•		•		•	CONTROL ARM / ALUMINUM
8K0 407 151C	•		•	•		CONTROL ARM / ALUMINUM
8K0 407 152C	•		•		•	CONTROL ARM / ALUMINUM
4G0 407 689	•		•	•	•	BALL JOINT / Ø17.2
4G0 411 317A	•			•	•	STABILIZER LINK
8K0 422 817A	•			•		TIE ROD END / M16x1.5 RHT
8K0 422 818A	•				•	TIE ROD END / M16x1.5 RHT
8J0 423 810	•			•	•	RACK END / M16x1.5 RHT


AUDI	Q7 (4L)	2005-2015
-------------	----------------	------------------



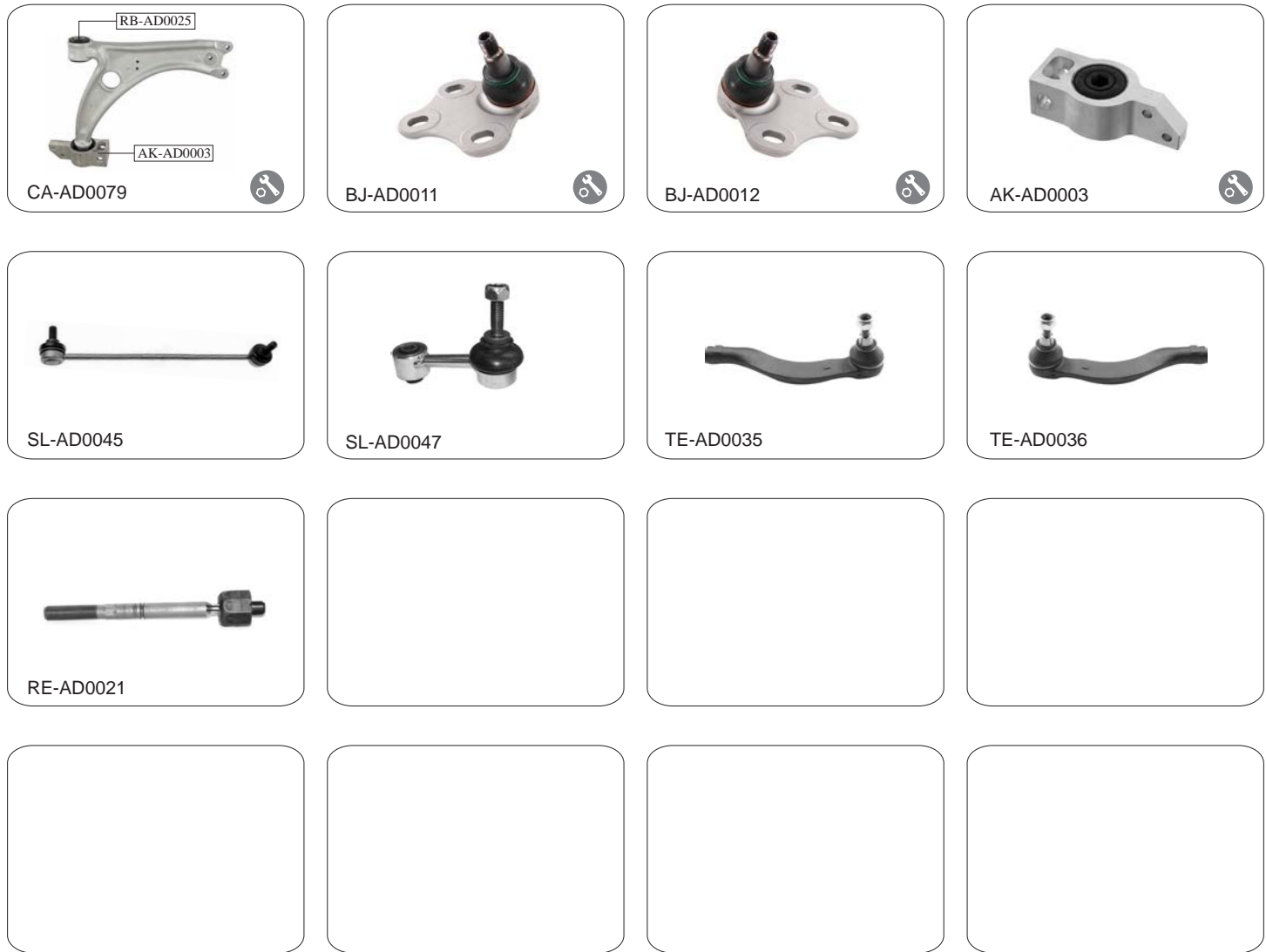
OE NO.		↑	↓	L	R	Description
7P0 407 021A	•	•		•	•	CONTROL ARM
7P0 407 151C	•			•	•	CONTROL ARM / ALUMINUM
7P0 407 152C	•			•	•	CONTROL ARM / ALUMINUM
7L8 407 151E	•			•	•	CONTROL ARM / CASTING
7L8 407 152E	•			•	•	CONTROL ARM / CASTING
7L0 505 311B	•			•		CONTROL ARM
7L0 505 312B	•				•	CONTROL ARM
7L0 505 323A	•			•	•	CONTROL ARM
7L0 505 397	•			•	•	CONTROL ARM
7L0 505 398	•			•	•	CONTROL ARM
7L0 411 317	•			•	•	STABILIZER LINK
7L0 505 465C	•			•		STABILIZER LINK
7L0 505 466C	•				•	STABILIZER LINK
7L0 422 817B	•			•		TIE ROD END / M16x1.5 RHT
7L0 422 818B	•			•		TIE ROD END / M16x1.5 RHT
7L0 422 821D	•			•	•	RACK END / M16x1.5 RHT




AUDI	Q7 (4M)	2015
------	---------	------



OE NO.		↑	↓	L	R	Description
4M0 407 505C	•	•		•		CONTROL ARM
4M0 407 506C	•	•			•	CONTROL ARM
4M0 407 509C	•	•		•		CONTROL ARM
4M0 407 510C	•	•			•	CONTROL ARM
4M0 407 693C	•		•	•		CONTROL ARM
4M0 407 694C	•		•		•	CONTROL ARM
4M0 407 151F	•		•	•		CONTROL ARM
4M0 407 152F	•		•		•	CONTROL ARM
4M0 407 689B	•		•	•	•	CONTROL ARM
4M0 411 317	•			•	•	STABILIZER LINK
4M0 423 811B	•			•	•	TIE ROD END
4M0 423 810C	•			•	•	RACK END

AUDI	TT II	2006>
------	-------	-------



OE NO.				L	R	Description
8J0 407 151D	•		•	•		CONTROL ARM
8J0 407 151D	•		•		•	CONTROL ARM
8J0 407 365	•		•	•		BALL JOINT
8J0 407 366	•		•		•	BALL JOINT
8J0 199 231	•			•	•	ARM SUPPORT
1K0 411 315B	•			•	•	STABILIZER LINK
1K0 505 465J	•			•	•	STABILIZER LINK
8J0 423 811	•			•		TIE ROD END / M16x1.5 RHT
8J0 423 812	•				•	TIE ROD END / M16x1.5 RHT
8J0 423 810	•			•	•	RACK END / M16x1.5 / RHT

AUDI	TT III	2016
------	--------	------

 <p>CA-AD0081</p>	 <p>BJ-AD0011</p>	 <p>BJ-AD0012</p>	 <p>SL-AD0071</p>
---	--	---	--

 <p>TE-AD0051</p>	 <p>TE-AD0052</p>	 <p>RE-AD0029</p>	
---	--	---	--

--	--	--	--

--	--	--	--

OE NO.		↑	↓	L	R	Description
8S0 407 151D	•	•		•		CONTROL ARM
8S0 407 151D	•	•			•	CONTROL ARM
8J0 407 365	•	•		•		BALL JOINT
8J0 407 366	•	•			•	BALL JOINT
5Q0 411 315B	•			•	•	SATBILIZER LINK
8S0 423 811A	•			•		TIE ROD END
8S0 423 812A	•				•	TIE ROD END
8S0 423 810A	•			•	•	RACK END